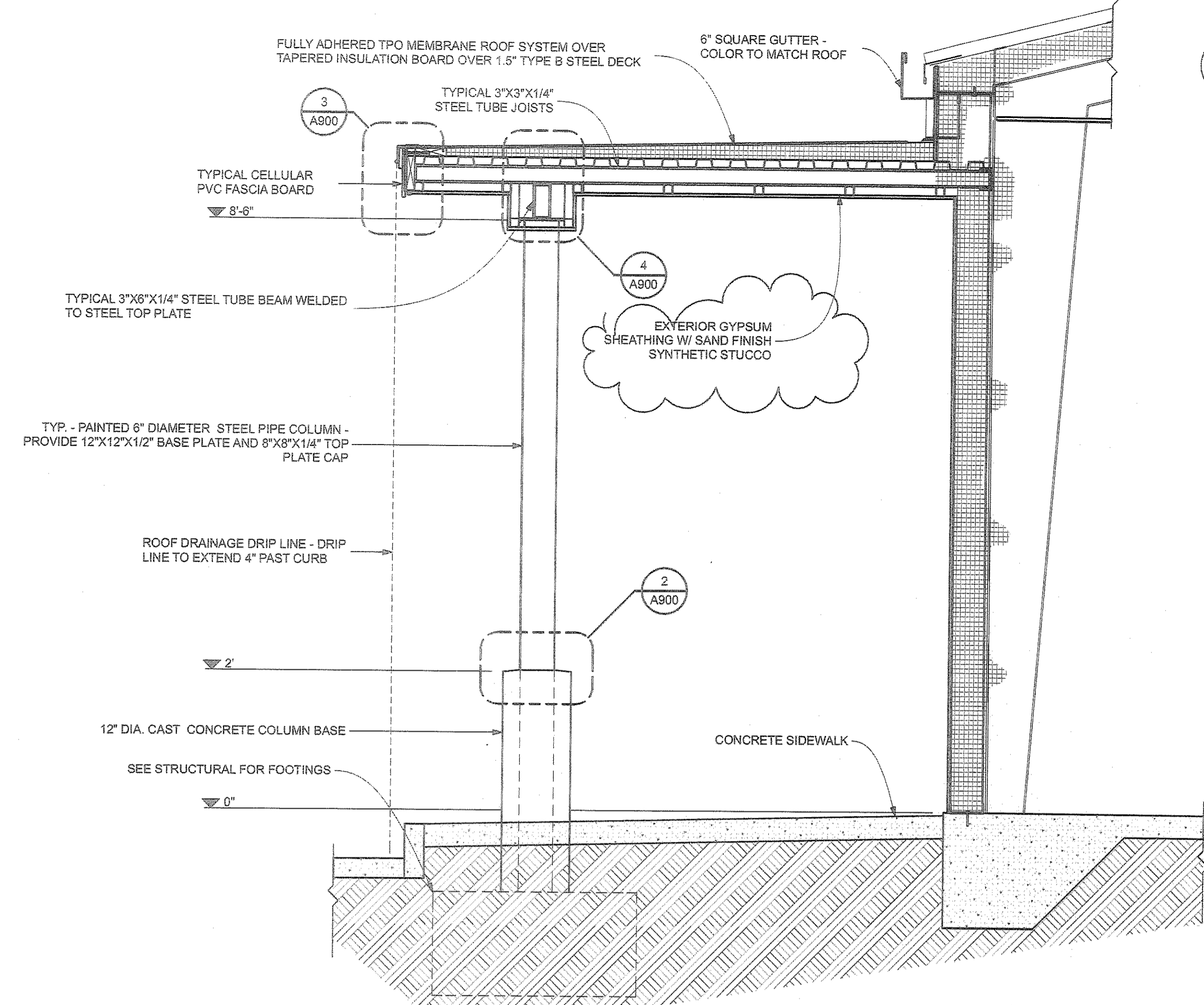
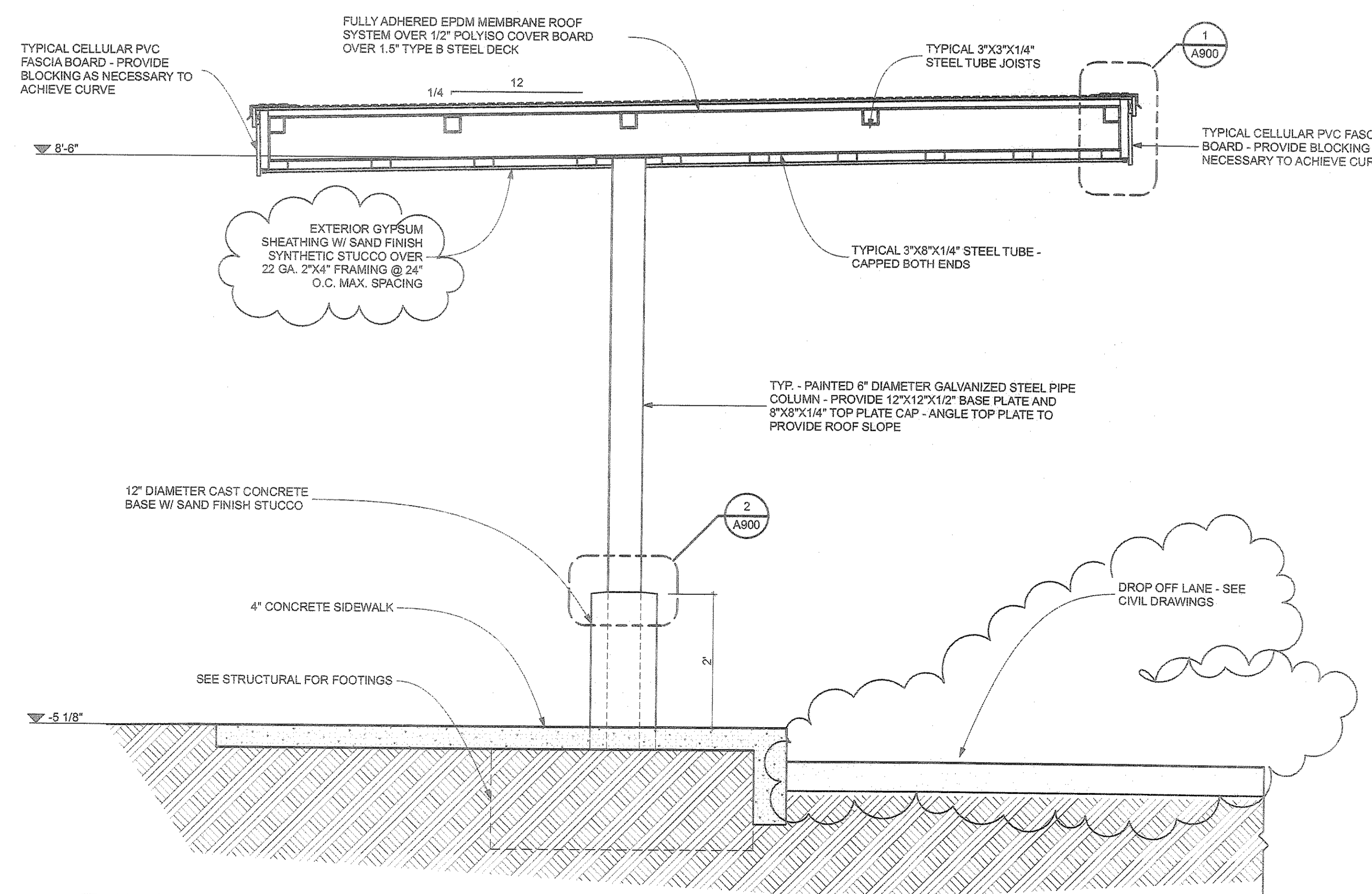


ALL IDEAS, DESIGNS, PLANS AND ARRANGEMENTS INDICATED ON THIS SHEET ARE THE PROPERTY OF KEVIN SCHWEIZER ARCHITECT, AND WERE CREATED, EVOLVED AND DEVELOPED FOR THIS SPECIFIC PROJECT.



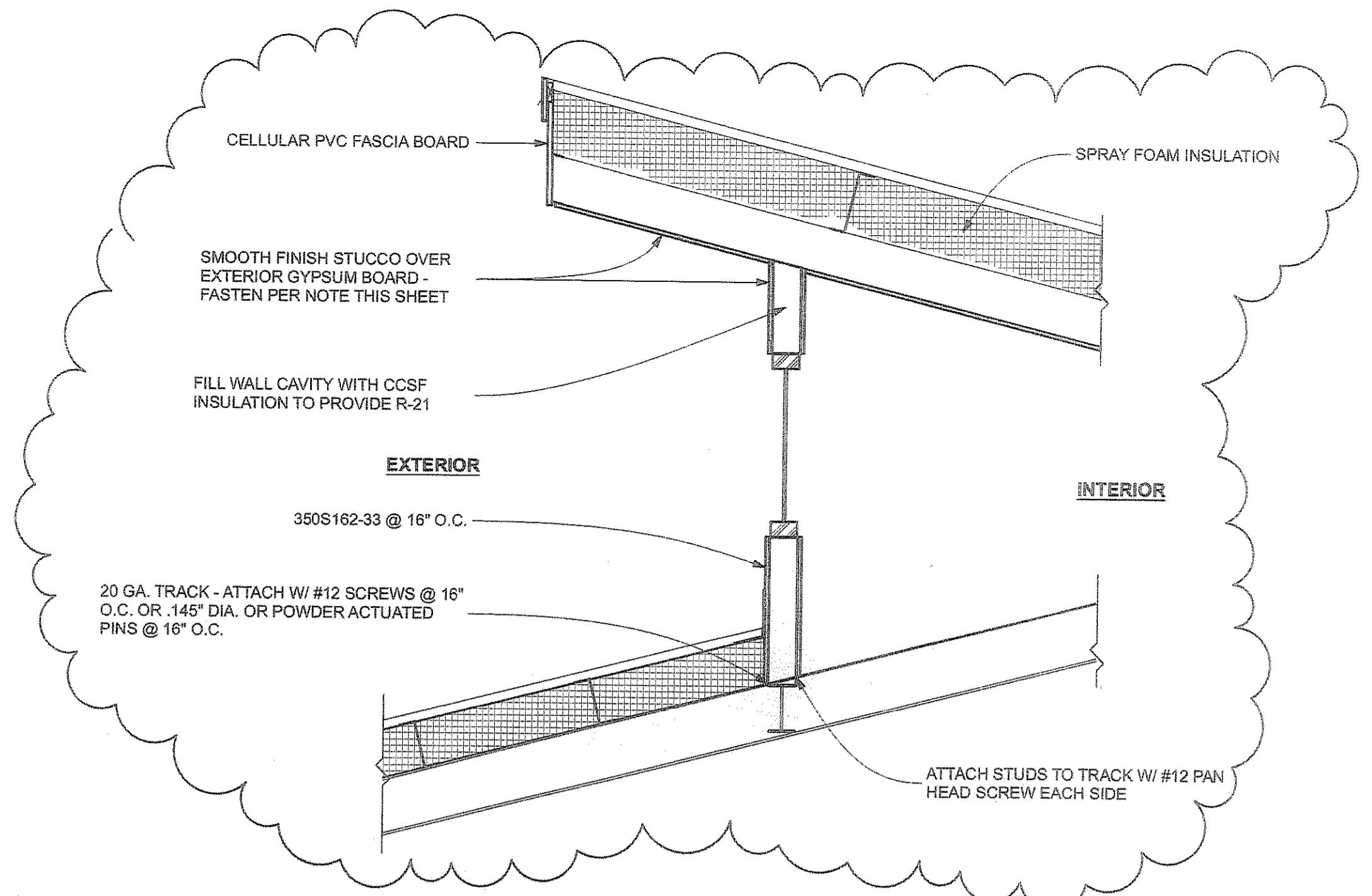
**3** TYPICAL SECTION AT COVERED WALKWAY  
SCALE: 3/4"=1'-0"



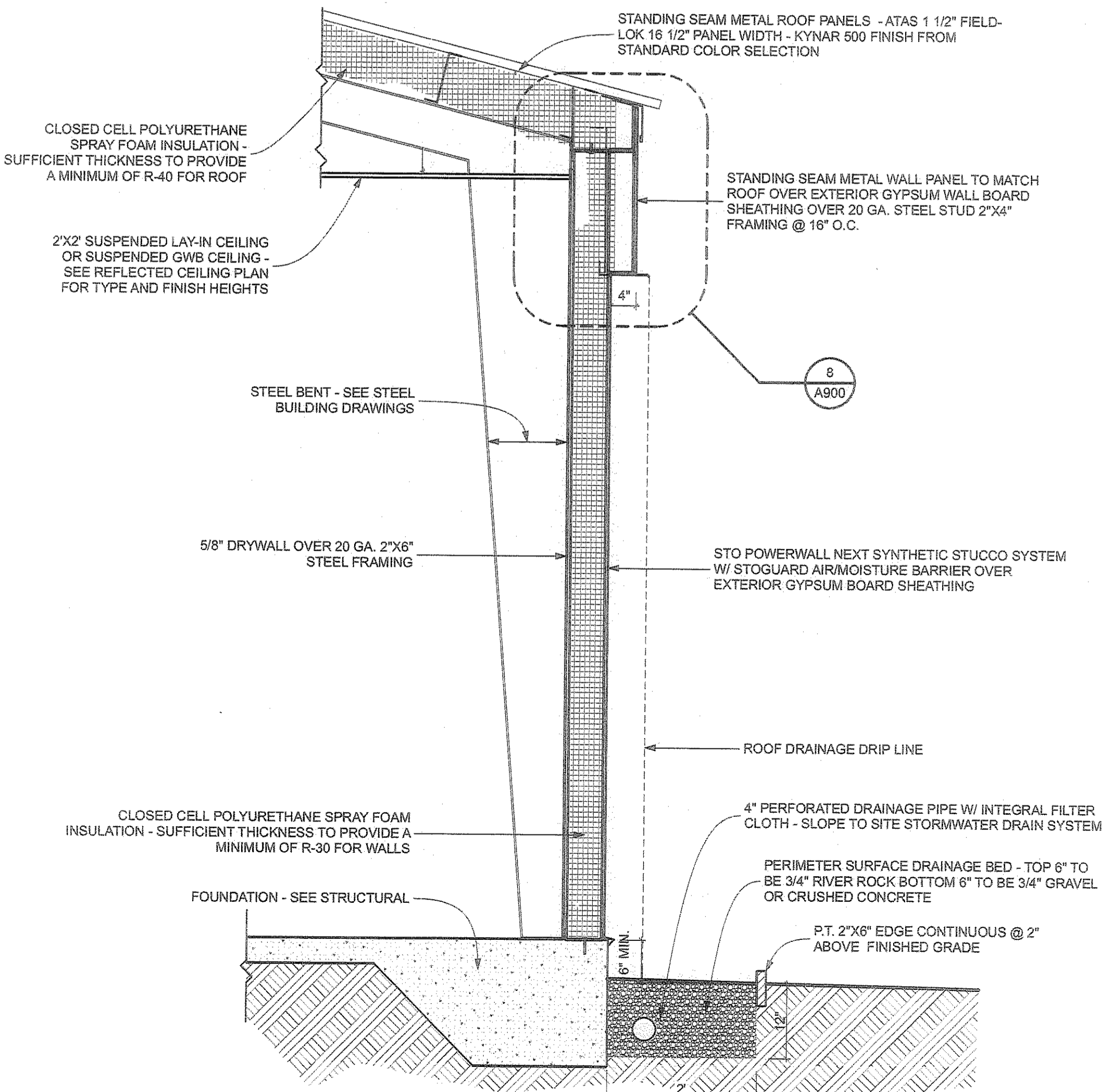
**2** TYPICAL CANOPY SECTION  
SCALE: 3/4"=1'-0"

**EXTERIOR GYPSUM SHEATHING NOTES**

1. EXTERIOR GYPSUM SHEATHING TO BE 1/2" DENSGLOSS.
2. FASTEN TO STEEL FRAMING WITH 1" BUGLE HEAD FINE THREAD RUST RESISTANT DRYWALL SCREWS @ 8" O.C. ALONG FRAMING.



**4** CLERESTORY WALL SECTION  
SCALE: 3/4"=1'-0"



**1** TYPICAL WALL SECTION  
SCALE: 3/4"=1'-0"

KEVIN SCHWEIZER ARCHITECT

205 PARKTOWNE BLVD., SUITE 3  
EDGEWATER, FLORIDA 32132  
Office: 386-314-0044  
Cell: 386-405-8322  
Fax: 386-957-1835  
kevin@kevinschweizerarchitect.com  
www.kevinschweizerarchitect.com  
A90013154

**PORT ORANGE PRESBYTERIAN CHURCH  
GATHERING BUILDING**  
PORT ORANGE, FLORIDA

1 JAN. 10, 2012

SEPTEMBER 20, 2011

WALL SECTIONS  
**A700**

4/11/12