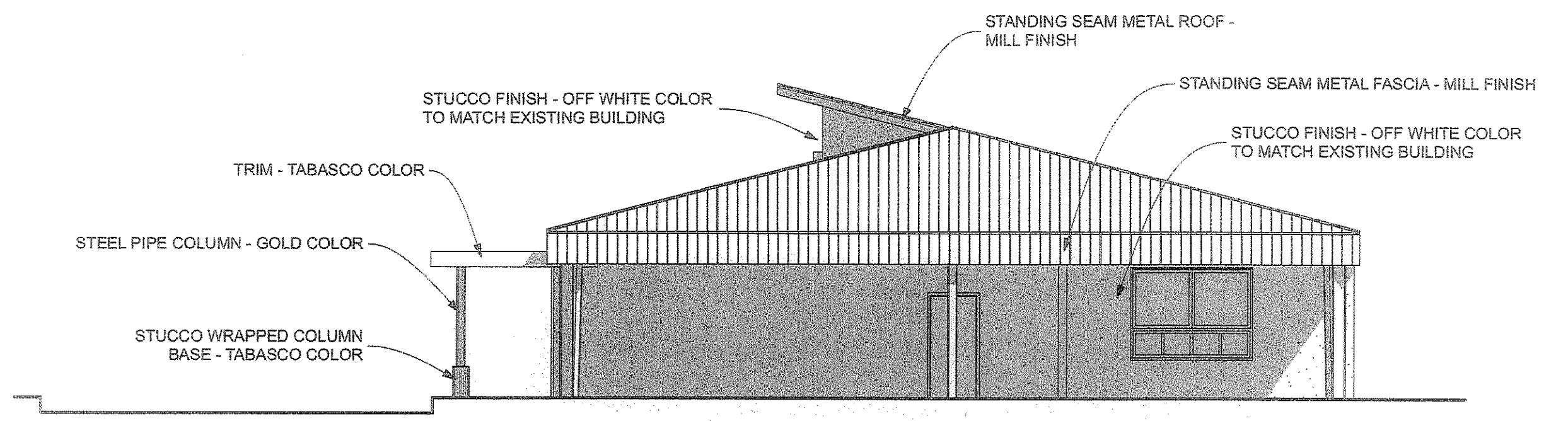


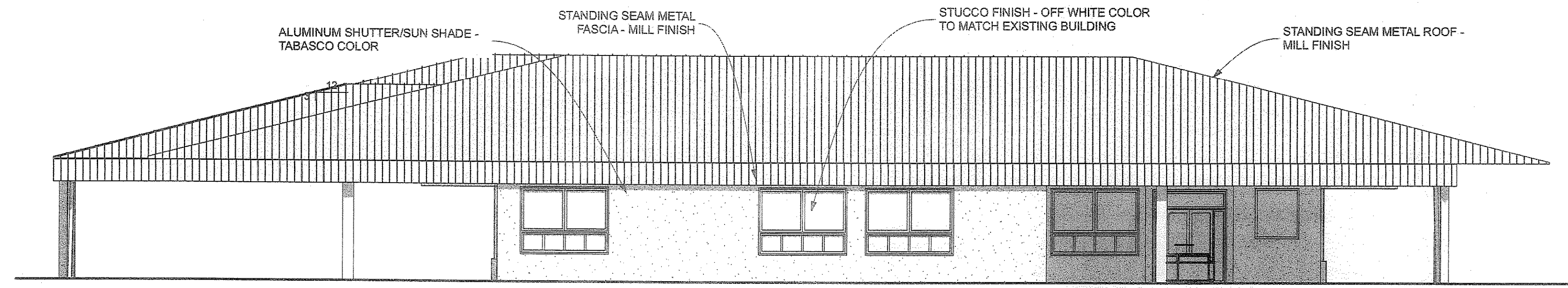
ALL IDEAS, DESIGNS, PLANS AND ARRANGEMENTS INDICATED ON THIS SHEET ARE THE PROPERTY OF KEVIN SCHWEIZER ARCHITECT, AND WERE CREATED, EVOLVED AND DEVELOPED FOR THIS SPECIFIC PROJECT.

**EXTERIOR FINISH NOTES**  
1. ALL EXTERNAL WALL-MOUNTED EQUIPMENT INCLUDING, BUT NOT LIMITED TO VENTS, LOUVERS, AND METERS, SHALL BE PAINTED TO MATCH THE PRIMARY BUILDING COLOR.



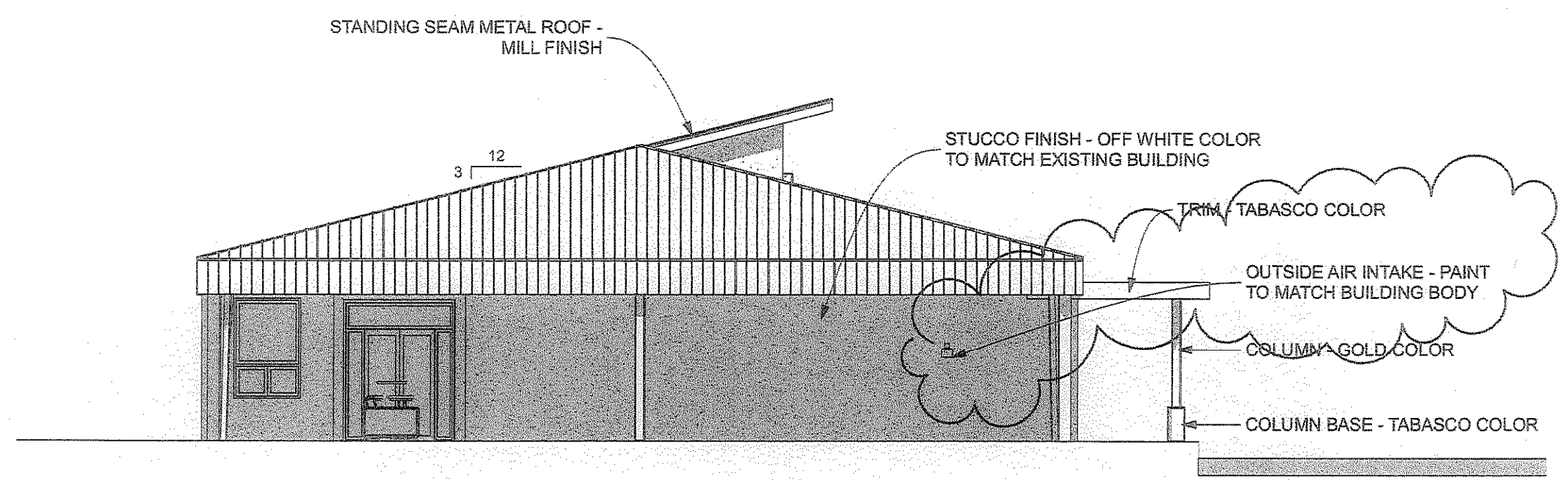
**WEST ELEVATION**

SCALE: 1/8" = 1'-0"



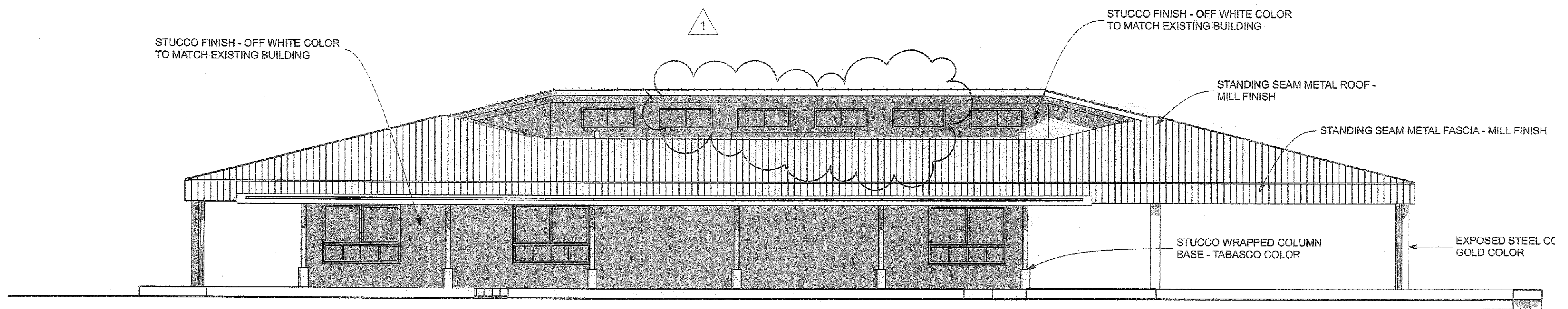
**SOUTH ELEVATION**

SCALE: 1/8" = 1'-0"



**EAST ELEVATION**

SCALE: 1/8" = 1'-0"



**NORTH ELEVATION**

SCALE: 1/8" = 1'-0"

KEVIN SCHWEIZER  
ARCHITECT  
205 PARKTOWNE BLVD., SUITE 3  
EDGEWATER, FLORIDA 32132  
Office 386-314-0044  
Cell 386-405-8322  
Fax 386-957-1833  
kevin@kevinschweizerarchitect.com  
www.kevinschweizerarchitect.com  
AR0013154

**PORT ORANGE PRESBYTERIAN CHURCH**  
GATHERING BUILDING  
PORT ORANGE, FLORIDA

1 JAN. 10, 2012

SEPTEMBER 20, 2011

ELEVATIONS  
**A500**

1/11/12