



STRUCTURAL ENGINEERS

400 S. Atlantic Ave,
Suite 106
Ormond Beach, FL 32176
Office: (386) 672-1214
Fax: (386) 672-1421
JOHN SIMKO
STRUCTURAL ENGINEER
FLORIDA 30122

msstructural@cfl.rr.com

LICENSE STAMP

TO THE BEST OF MY KNOWLEDGE THESE PLANS
ARE IN ACCORDANCE WITH THE LATEST EDITION
OF THE 2007 FLORIDA BUILDING CODE WITH
2009 SUPPLEMENTS

REVISIONS

NO.	DATE	BY	DESCRIPTION

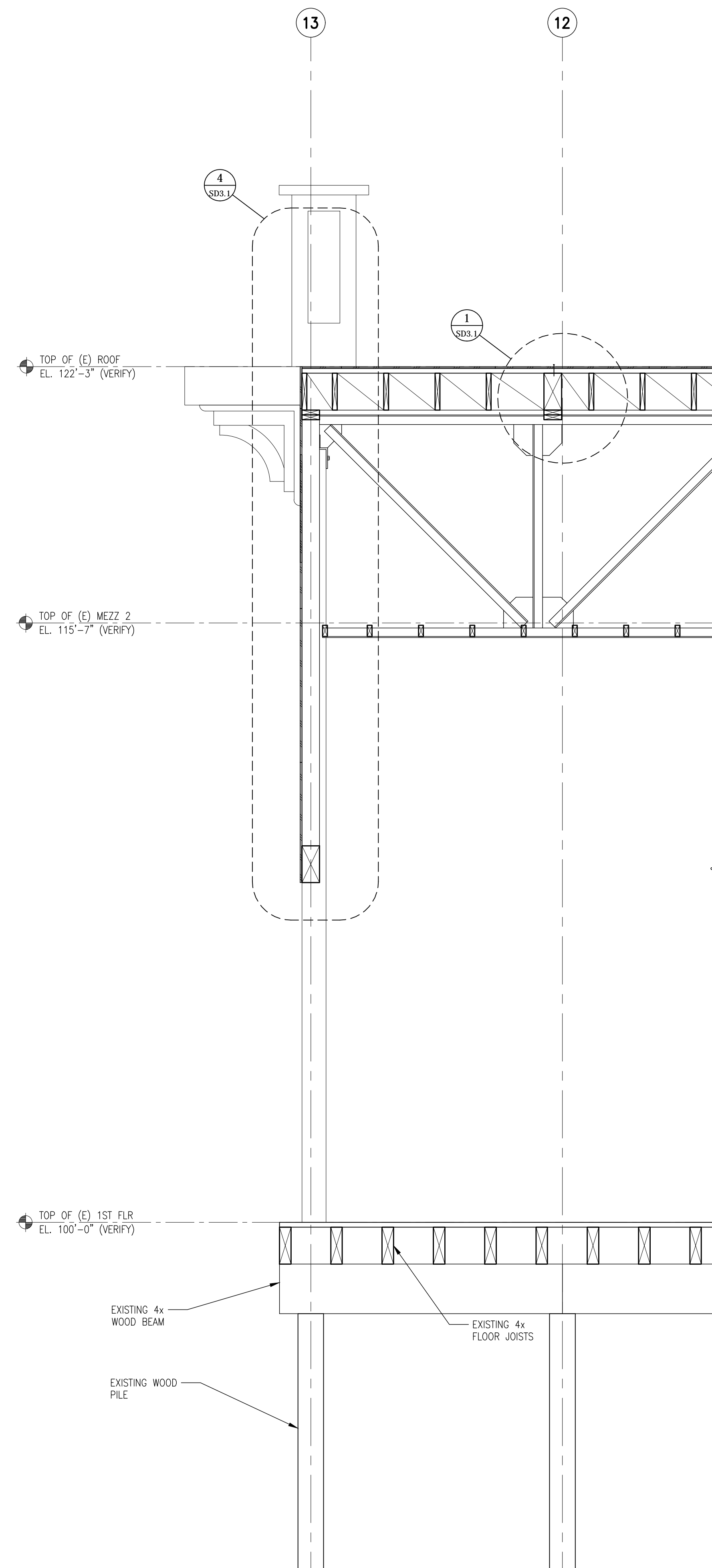
PROJECT
2007 FBC WIND DESIGN UPDATE FOR:
DAYTONA BEACH PIER
MAIN STREET
DAYTONA BEACH, FLORIDA

DRAWING TITLE
WALL SECTIONS

JOB NO.	10-010
SCALE	AS NOTED
DRAWN	JJB
CHECKED	JPS
DATE	7/1/10

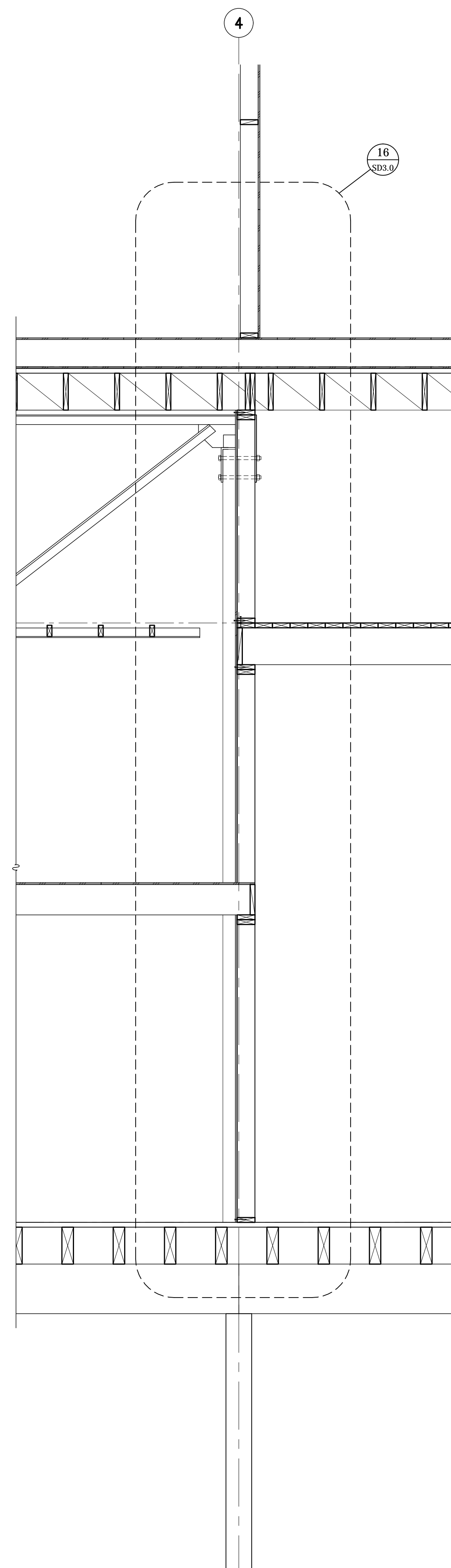
SHEET NUMBER

SD2.1



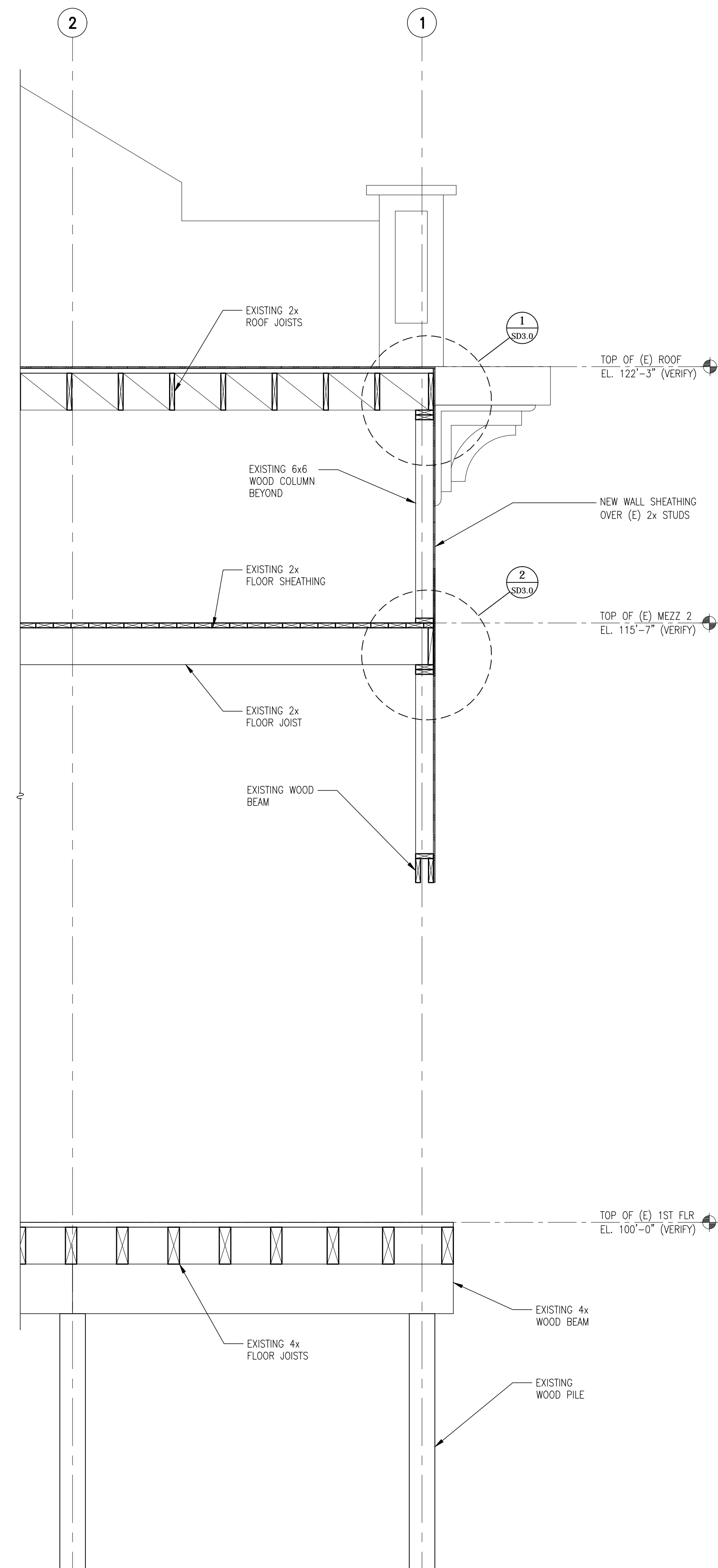
3 WALL SECTION

Scale: 1/2" = 1'-0"



2 WALL SECTION

Scale: 1/2" = 1'-0"



1 WALL SECTION

Scale: 1/2" = 1'-0"