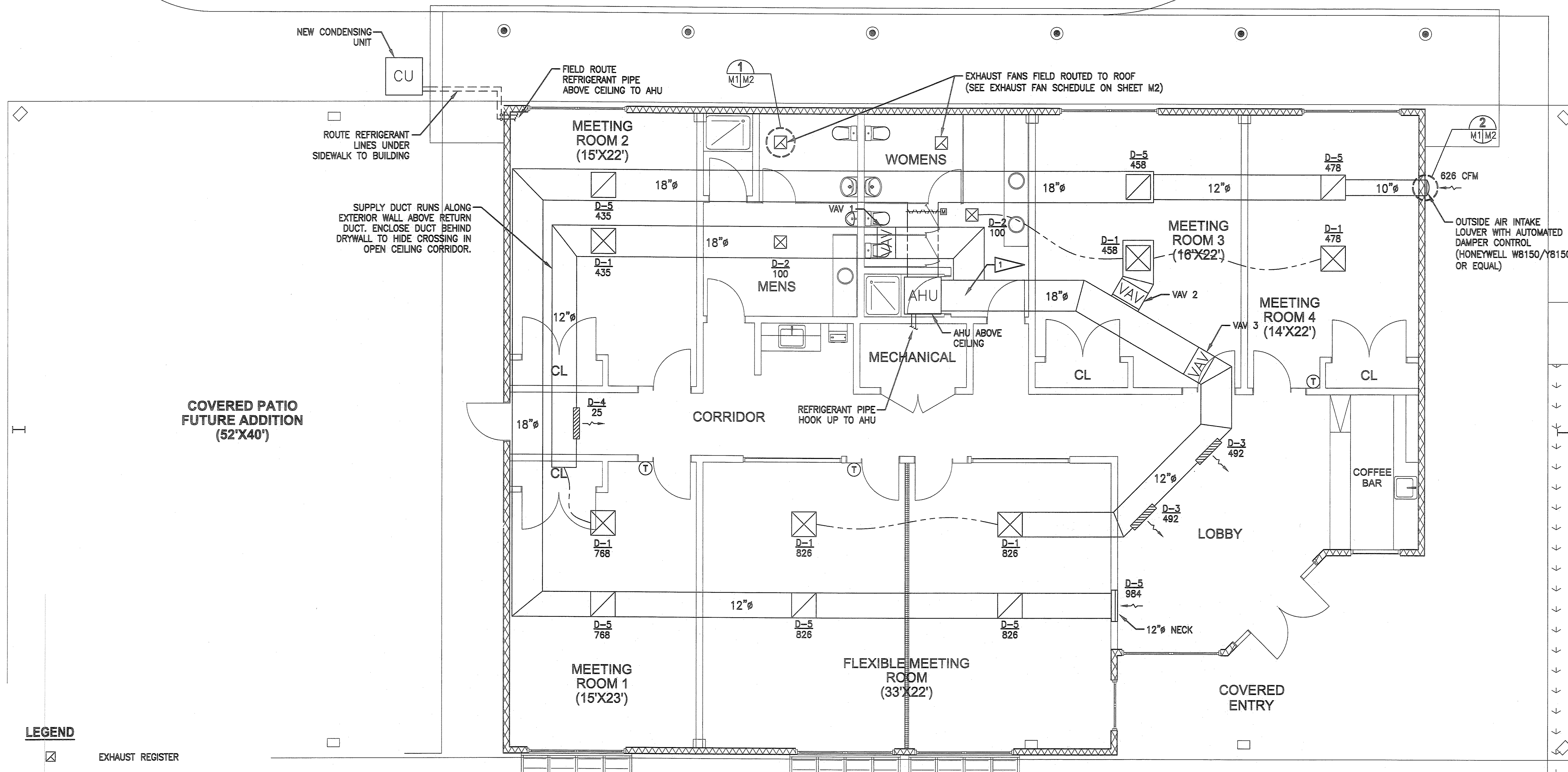


PHASE II COVERED DROP-OFF (20'X40')








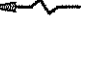



All ideas, designs, arrangements and plans indicated or represented by this drawing are owned by and the property of SCHWEIZER • WALDROFF ARCHITECTS, incorporated, and were created, evolved and developed for the use on and in connection with this specific project.



COVERED PATIO  
FUTURE ADDITION  
(52'X40')

626 CFM  
OUTSIDE AIR INTAKE  
LOUVER WITH AUTOMATED  
DAMPER CONTROL  
(HONEYWELL W8150/Y8150  
OR EQUAL)

**LEGEND**

-  EXHAUST REGISTER
-  RETURN REGISTER
-  4-WAY SUPPLY DIFFUSER
-  1-WAY SUPPLY DIFFUSER
-  VAV BOX (3 ZONES)
-  FLEXIBLE DUCTING,  
MINIMUM R8 INSULATION
-  AIR FLOW DIRECTION
-  THERMOSTAT
-  DIAMETER
-  MOTORIZED DAMPER
-  D-X  
XXX DIFFUSER TYPE  
CFM

**GENERAL NOTES**

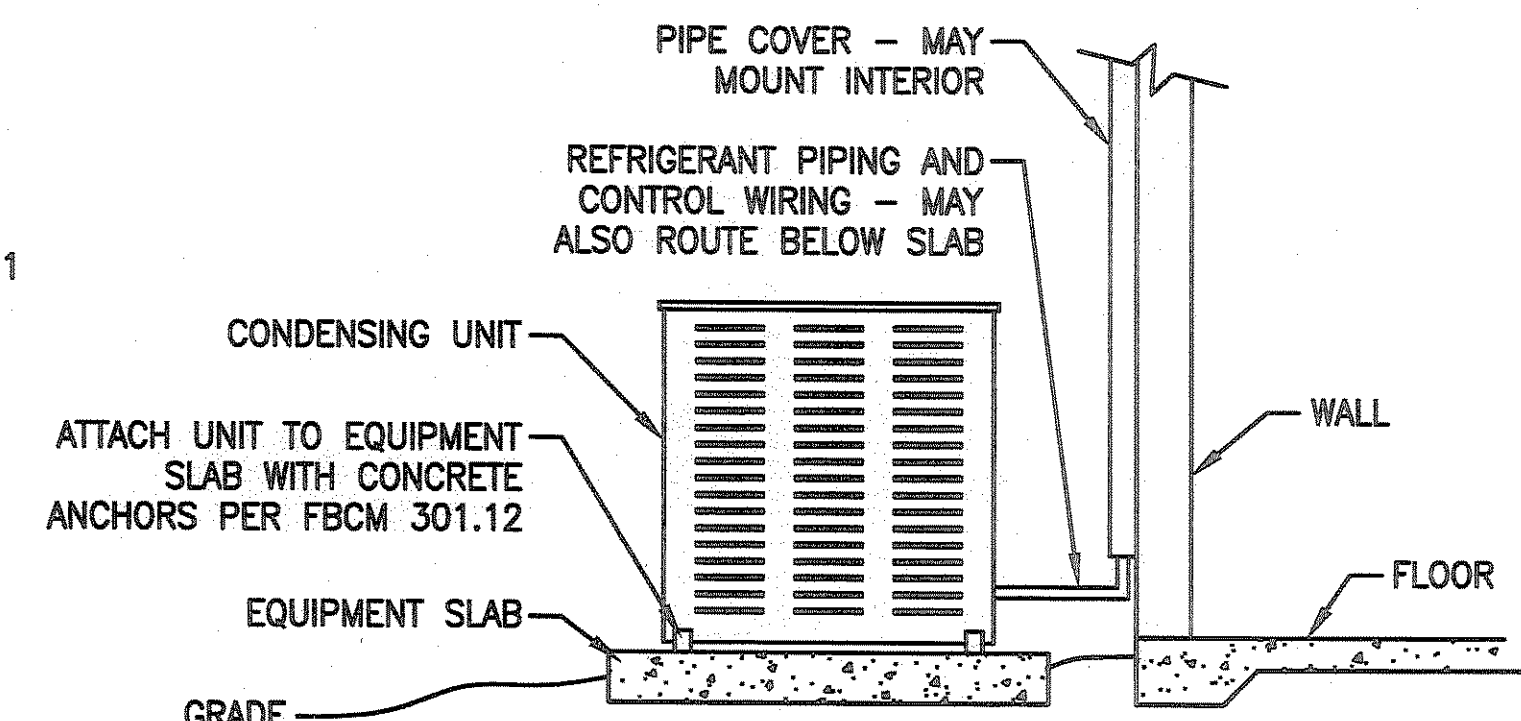
1. DUCTS PENETRATING CORRIDOR WALLS WILL BE PROTECTED IN ACCORDANCE TO: FBCB 716.5.4; FBCM 716.5.4.1; FBCM 607.5.3; AND, FBCM 607.5.4. SEE FIRE PROTECTION DRAWINGS.
2. SMOKE DETECTOR(S) WILL BE INSTALLED IN SUPPLY AIR OF AC SYSTEM AS REQUIRED PER SECTION 606.2.1 OF THE FBCM. SEE FIRE PROTECTION DRAWINGS.
3. REVISE CONTROL DIAGRAM TO INDICATE THAT SMOKE DETECTOR WILL BE INSTALLED IN SUPPLY AIR AS REQUIRED PER SECTION 606.2.1 OF THE FBCM. SEE FIRE PROTECTION DRAWINGS.

**FLAG NOTES**

-  INSTALL OVER-PRESSURE BYPASS DUCT SYSTEM OR DUMP VALVE TO ACCOMMODATE CLOSED VAV'S.

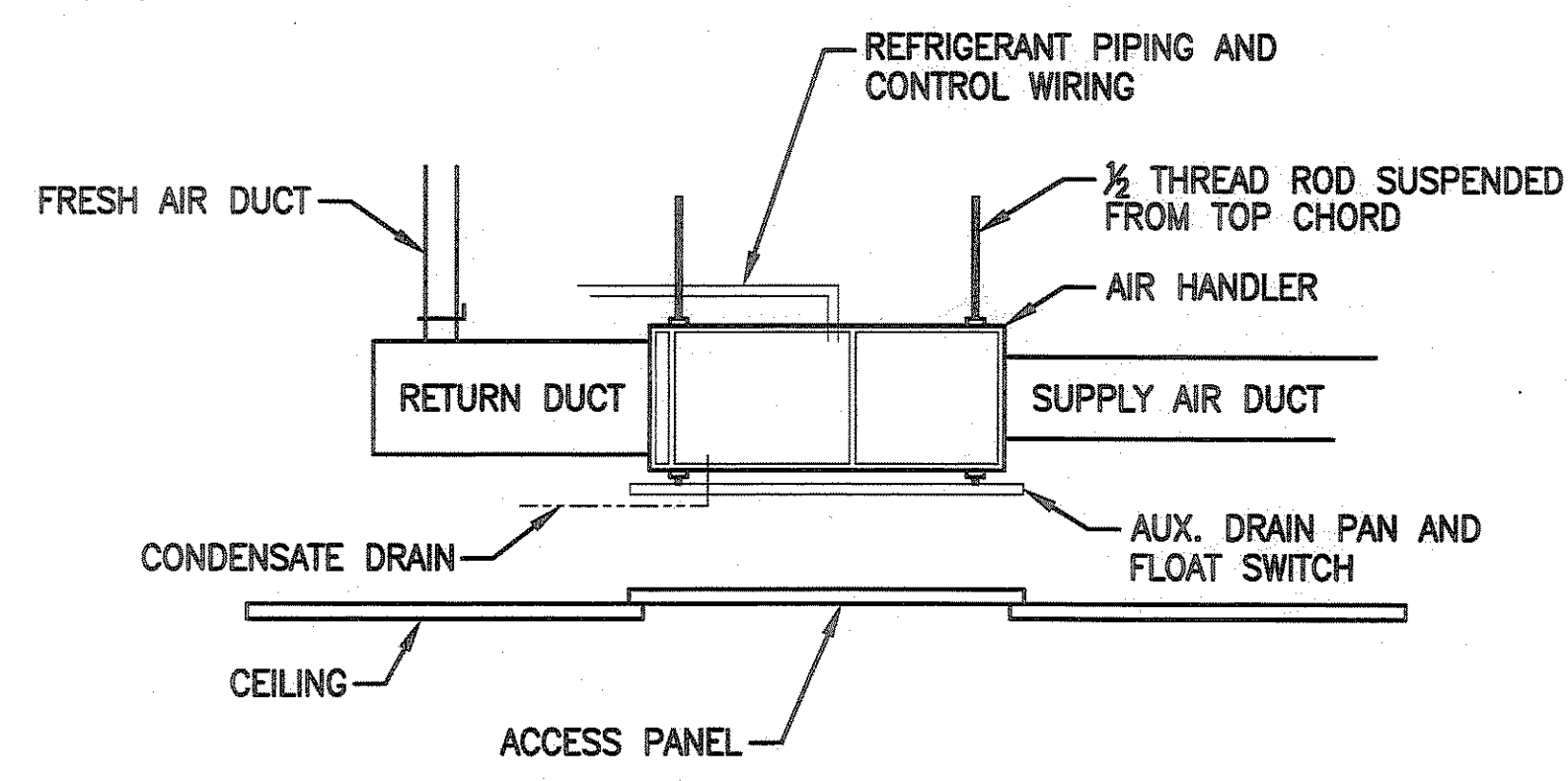
**HVAC PLAN**

SCALE: 1/4" = 1'-0"



**CONDENSING UNIT DETAIL**

NOT TO SCALE



**HORIZONTAL AIR HANDLER DETAIL**

NOT TO SCALE

GRAPHIC SCALE  
0 1 2 4 8

SCALE IN FEET  
1/4" = 1'-0"

**Nelson Engineering Co.**  
5330 North Courtney Pkwy  
Merritt Island, FL 32953  
(321) 448-1128 Fax (321) 448-1195  
www.NelsonEngrCo.com