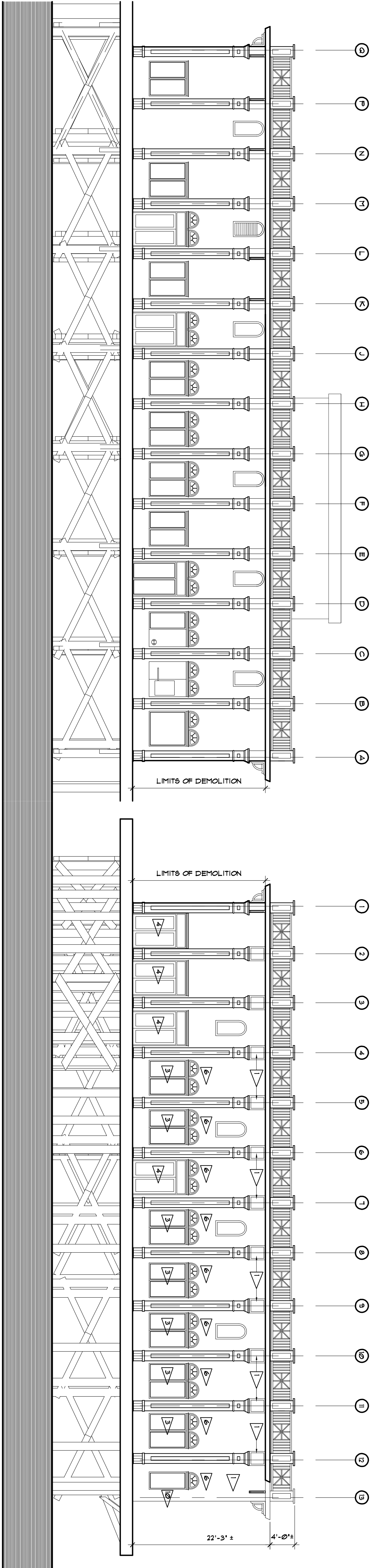


DEMOLITION SOUTH ELEVATION
SCALE: 1/8"=1'-0"
AD2.1

DEMOLITION EAST ELEVATION
SCALE: 1/8"=1'-0"
AD2.1

- DEMOLITION NOTES:**
- 1 REMOVE PLYWOOD PATCH AND ANY REMAINING STUCCO.
 - 2 REMOVE METAL PANEL.
 - 3 REMOVE SLIDING GLASS DOOR ASSEMBLY.
 - 4 REMOVE STOREFRONT ASSEMBLY.
 - 5 DEMOLISH WOODEN AWNING.
 - 6 REMOVE HALF-ROUND WINDOW, SILL/VACE FOR RE-USE.
 - 7 REMOVE ACCESS PANEL AND TRIM, REFACE OPENING WITH 3/4" MARINE GRADE WOOD PLYWOOD.
 - 8 REMOVE EXISTING LOUVERS AND TRIM.
 - 9 REMOVE EXISTING WOOD BRACKETS.
 - 10 REMOVE FIXED GLASS PANEL.
 - 11 REMOVE EXISTING FISHING LOCKERS.



DEMOLITION NORTH ELEVATION
SCALE: 1/8"=1'-0"
AD2.1

DEMOLITION WEST ELEVATION
SCALE: 1/8"=1'-0"
AD2.1

NOTE: NORTH ELEVATION HAS BEEN PARTIALLY DEMOLISHED. CONFIGURATION SHOWN IS 'AS BUILT' PRIOR TO DEMOLITION BY CITY FORCES.

AD2.1
DESIGN, INC.

918 NORTH NOVA RD.
HOLLY HILL, FL 32117
AA 28000587
PHONE (386) 255-8987
FAX (386) 255-8989

REV	REVISIONS	DATE

DAYTONA BEACH PIER BUILDING RENOVATION

MAIN STREET DAYTONA BEACH, FL

PJT: 02126.11
DATE: 06/30/10
DGN BY: HKC
REV BY: DHS
SCALE: AS NOTED

AD2.1
DEMOLITION ELEVATIONS