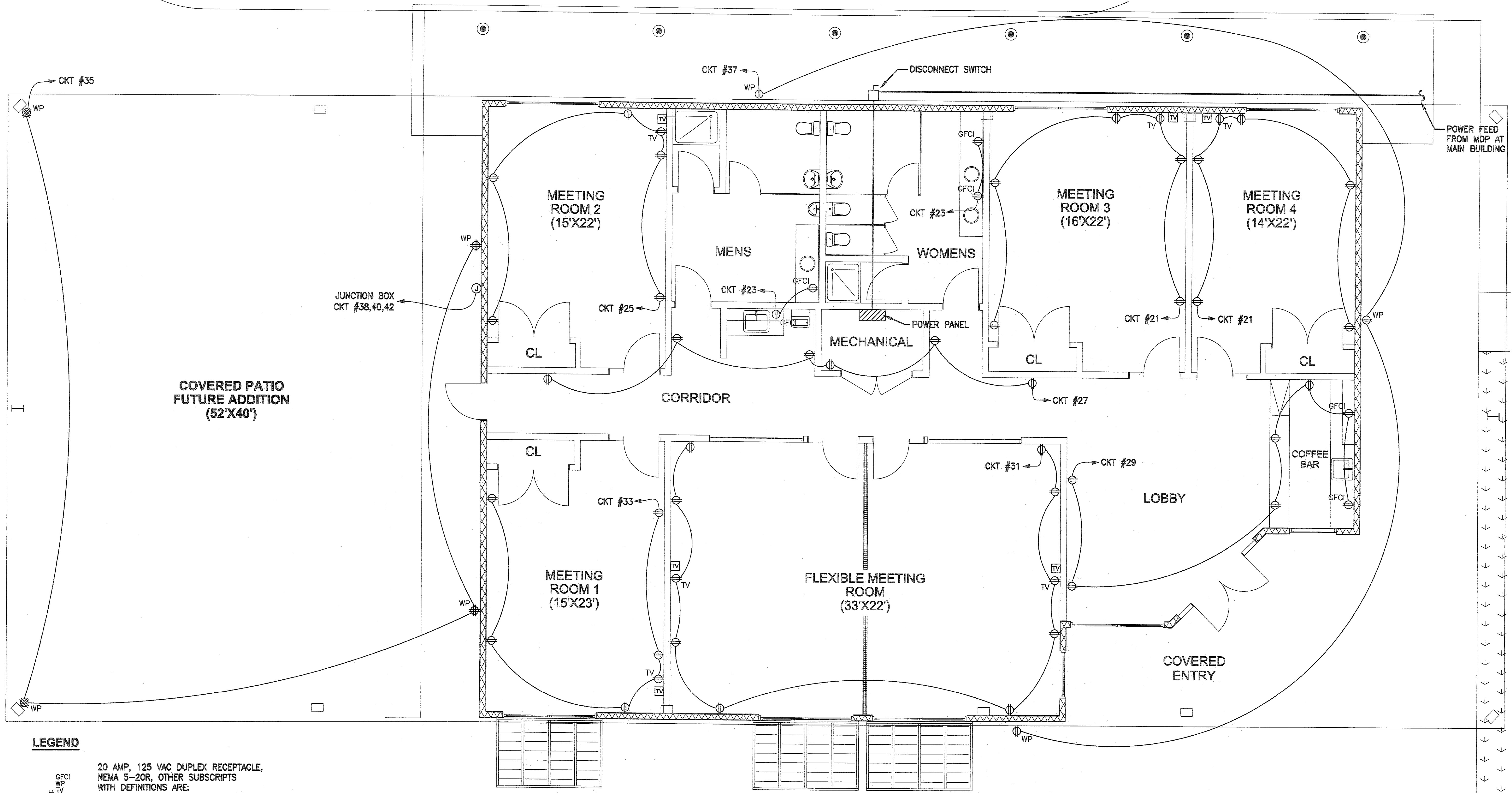


All ideas, designs, arrangements and plans indicated or represented by this drawing are owned by and the property of SCHWEIZER \* WALDROFF ARCHITECTS, Incorporated, and were created, evolved and developed for the use on and in connection with this specific project.



**LEGEND**

GFCI  
 WP  
 TV  
 20 AMP, 125 VAC DUPLEX RECEPTACLE, NEMA 5-20R, OTHER SUBSCRIPTS WITH DEFINITIONS ARE:  
 GFCI - GROUND FAULT CIRCUIT INTERRUPTER  
 WP - GFCI RECEPTACLE IN A WEATHER PROOF COVER  
 TV - MOUNTED @ 96" AFF (TOP) FOR TELEVISION USE

WP  
 20 AMP, 125 VAC QUADPLEX RECEPTACLE, NEMA 5-20R, OTHER SUBSCRIPTS WITH DEFINITIONS ARE:  
 WP - GFCI RECEPTACLE IN A WEATHER PROOF COVER

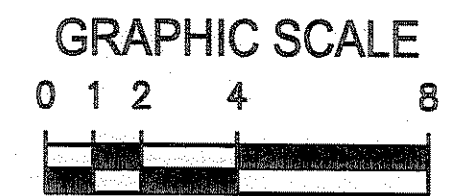
T RJ 45 TELEPHONE CONNECTION  
 D CAT 5E ETHERNET NPT PORT  
 TV RG 6 COAXIAL CABLE CONNECTION; MOUNTED @ 96" AFF (TOP)  
 NEMA 3R NON-FUSED DISCONNECT SWITCH  
 POWER PANEL  
 JUNCTION BOX

**GENERAL NOTES**

1. ALL WORK SHALL BE IN ACCORDANCE WITH THE 2008 NATIONAL ELECTRIC CODE (NEC), NFPA 70.
2. ELECTRICAL CIRCUITS THAT CROSS CORRIDOR SHALL BE IN CONDUIT BURIED 24" BELOW GRADE.
3. CONTRACTOR SHALL FIELD ROUTE ALL CIRCUITS. ALL WIRE SHALL BE PLENUM RATED, ARMORED CABLE, OR IN PVC CONDUIT.
4. CONDUCTOR SIZING ON ONE LINE DRAWING LOCATED ON SHEET E6.

**BUILDING POWER PLAN**

SCALE: 1/4" = 1'-0"



SCALE IN FEET  
1/4" = 1'-0"

