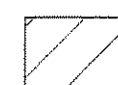



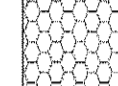


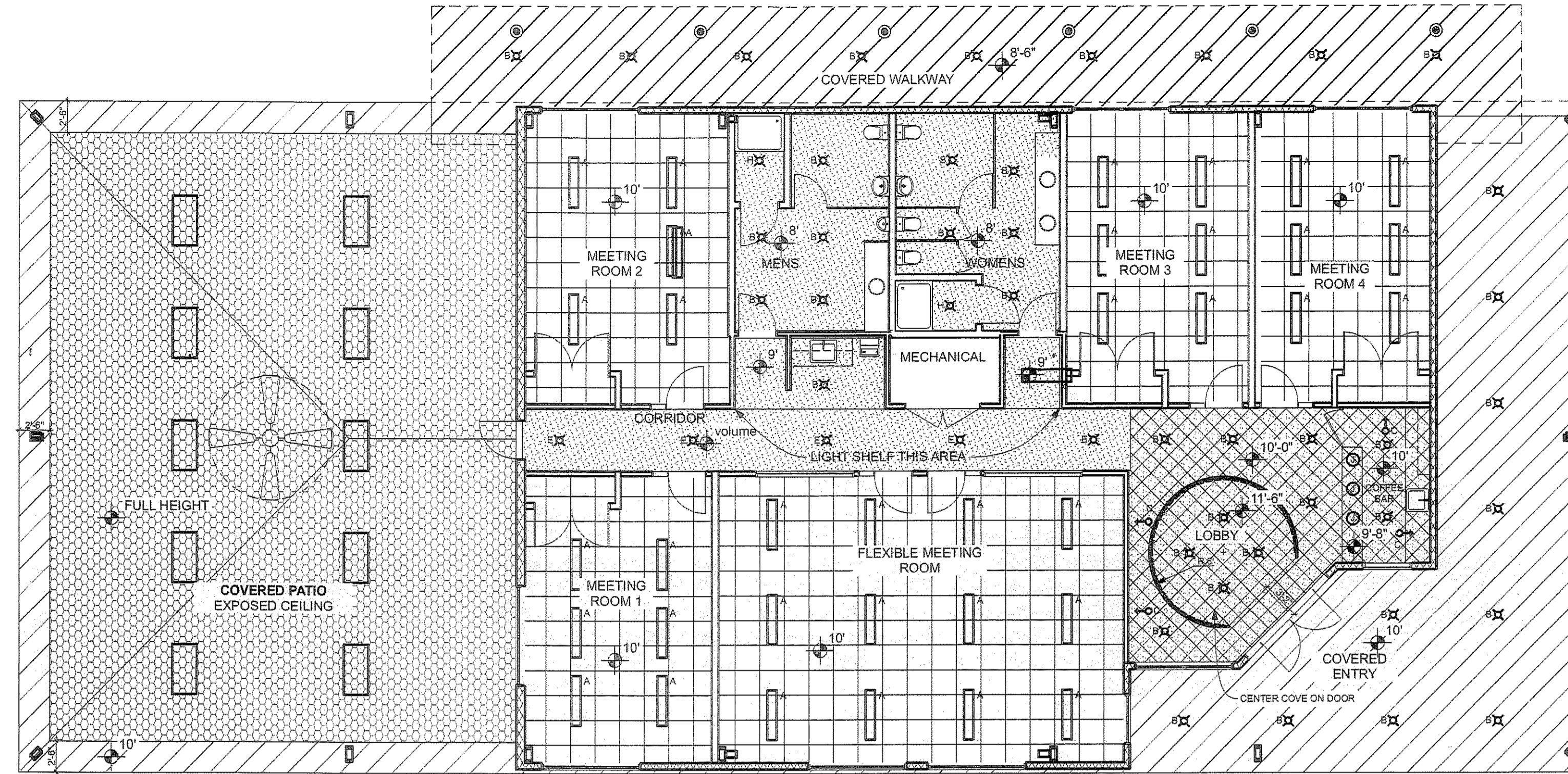
ALL IDEAS, DESIGNS, PLANS AND ARRANGEMENTS INDICATED ON THIS SHEET ARE THE PROPERTY OF KEVIN SCHWEIZER ARCHITECT, AND WERE CREATED, EVOLVED AND DEVELOPED FOR THIS SPECIFIC PROJECT.

REFLECTED CEILING LEGEND

-  1/2" EXTERIOR GYPSUM SHEATHING DENS GLASS SHEATHING BASIS OF DESIGN WITH SAND FINISH SYNTHETIC STUCCO - FASTEN TO MIN. 1 1/4" WIDE STEEL FRAMING @ 16" O.C. WITH #6 1 1/4" BULGE HEAD FINE THREAD RUST-RESISTANT DRYWALL SCREWS @ 8" O.C. ALONG FRAMING
-  1 HOUR RATED DIRECT ATTACHED GYPSUM WALL BOARD - PROVIDE TWO LAYERS 5/8" TYPE X GYPSUM BOARD TO STEEL FRAMING @ 16" O.C. MAX. GEORGIA PACIFIC TOUGH ROCK FIREGUARD GYPSUM BOARD BASIS OF DESIGN - FASTEN BASE LAYER AT RIGHT ANGLES TO FRAMING WITH 1" TYPE S DRYWALL SCREWS @ 24" O.C. FASTEN FACE LAYER AT RIGHT ANGLES TO FRAMING WITH 1 5/8" TYPE S DRYWALL SCREWS @ 12" O.C. - PROVIDE SAND FINISH
-  DIRECT ATTACHED GYPSUM WALL BOARD - PROVIDE ONE LAYER 1/2" GYPSUM BOARD TO STEEL FRAMING @ 24" O.C. MAXIMUM SPACING. GEORGIA PACIFIC TOUGH ROCK CD CEILING BOARD MOLD-GUARD BASIS OF DESIGN - FASTEN TO FRAMING WITH 1" TYPE S DRYWALL SCREWS @ 12" O.C. IN RESTROOMS USE GEORGIA PACIFIC TOUGH ROCK MOLD-GUARD GYPSUM BOARD
-  2'X2' SUSPENDED CEILING - ARMSTRONG DUNE TEGULAR WITH 9/16" SUPRAFINE EXPOSED TEE GRID SYSTEM
-  PERFORATED PAINTED METAL CEILING: PATTERN AND COLOR TBD

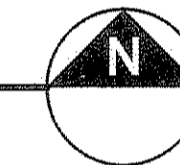
CEILING NOTES

1. AN INTUMESCENT PAINT SHALL BE APPLIED TO THE UNDERSIDE OF THE ENTIRE SPRAY FOAM CEILING INSULATION TO OBTAIN THE REQUIRED 15 MINUTE THERMAL BARRIER. PAINT SHALL BE FIRESHIELD NFPA 286 THERMAL BARRIER INTUMESCENT COATING.

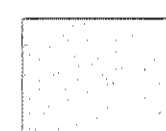
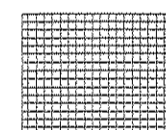

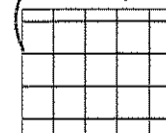

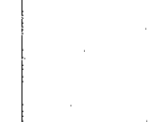


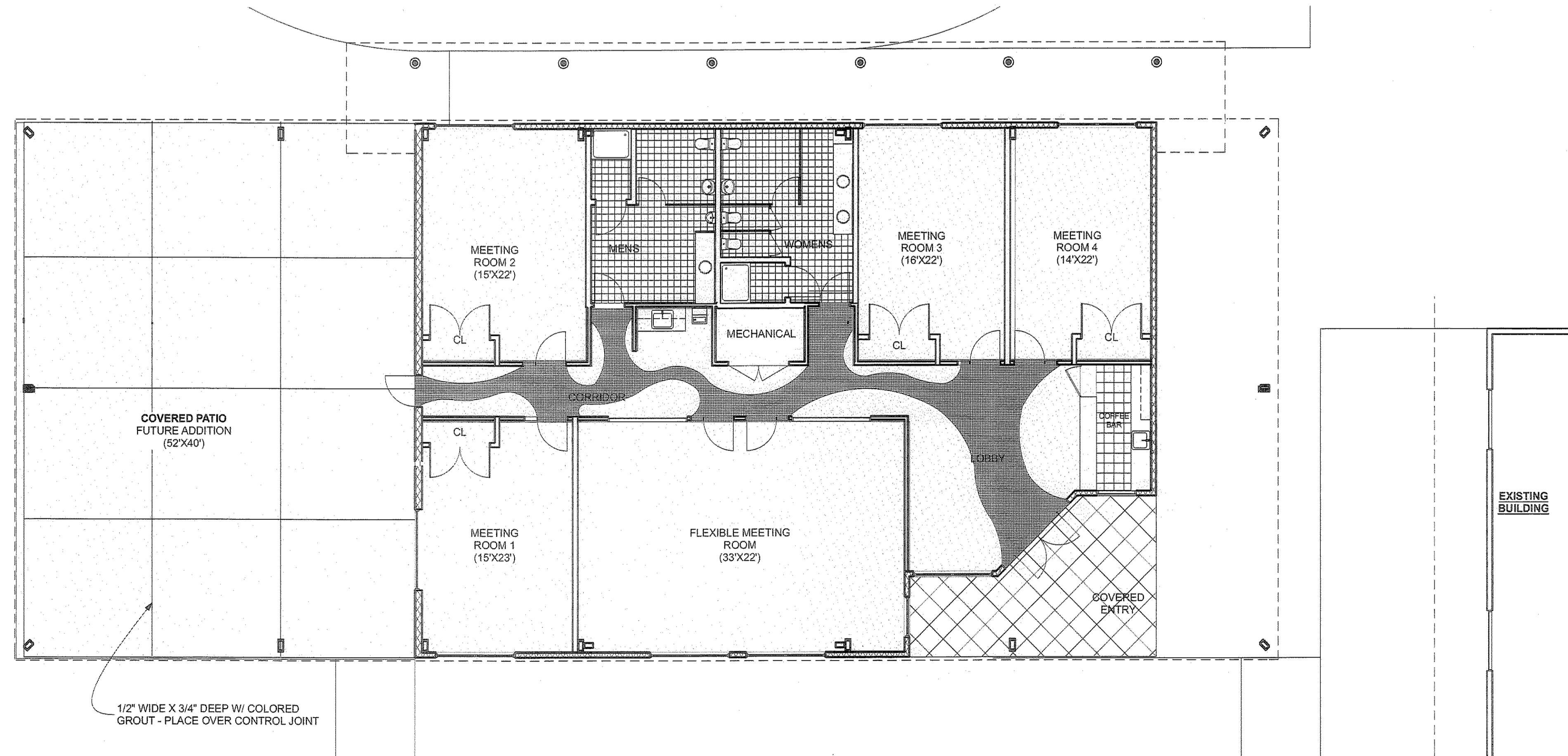
REFLECTED CEILING PLAN

SCALE: 1/8" = 1'-0"



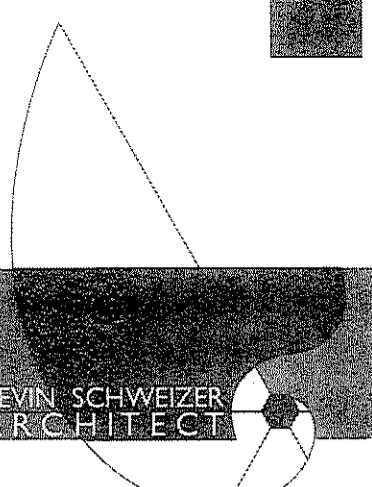
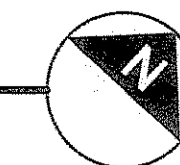
FLOOR PATTERN LEGEND

-  CARPET TILES - SHAW NO RULES COLLECTION COLORS TBD - DISPERSE PATTERN 2618 SF
-  CARPET TILES - SHAW TRU COLOURS COLORS TBD - PATTERN AS INDICATED ON PLAN 267 SF
-  12"X12" PORCELAIN TILE 44 SF
-  12"X12" PORCELAIN TILE - PROVIDE COORDINATING MINIMUM 6" TILE WALL BASE CROSSVILLE VISTA AMERICANA SERIES BASIS OF DESIGN 404 SF
-  24"X24" PORCELAIN TILE - ALTERNATE SCORED & COLORED CONCRETE 300 SF
-  BROOM FINISH CONCRETE 2100 SF



FLOOR PATTERN PLAN

SCALE: 1/8" = 1'-0"



205 PARKTOWNE BLVD., SUITE 3
EDGEWATER, FLORIDA 32132
Office 386-314-0044
Cell 386-405-8322
Fax 386-957-1835
kevin@kevinschweizerarchitect.com
www.kevinschweizerarchitect.com
AR0013154

PORT ORANGE PRESBYTERIAN CHURCH
GATHERING BUILDING
PORT ORANGE, FLORIDA

1 JAN. 10, 2012

SEPTEMBER 20, 2011

RCP
A301

[Signature]
1/11/12