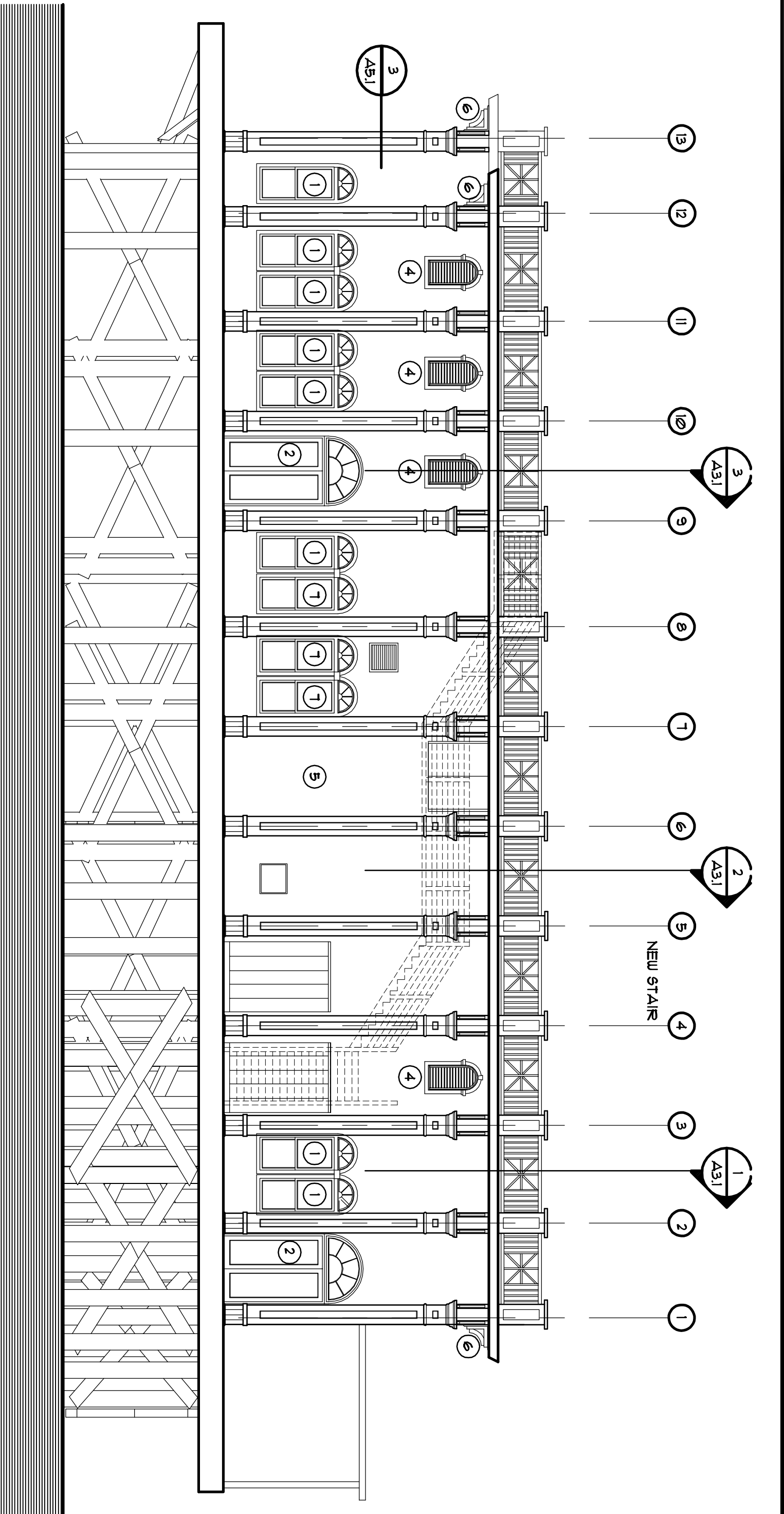


SOUTH ELEVATION

SCALE: 1/8"=1'-0"

A 422

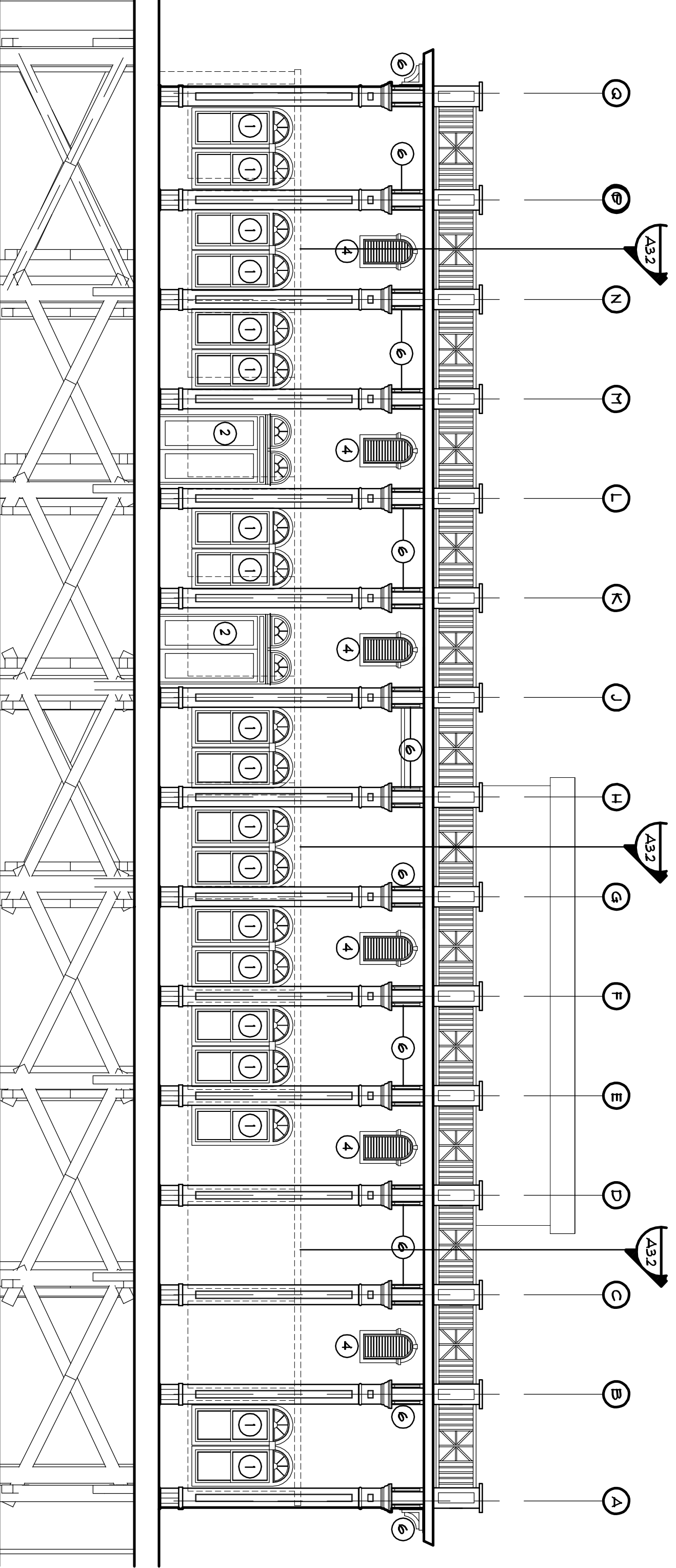


EAST ELEVATION

SCALE: 1/8"=1'-0"

B 422

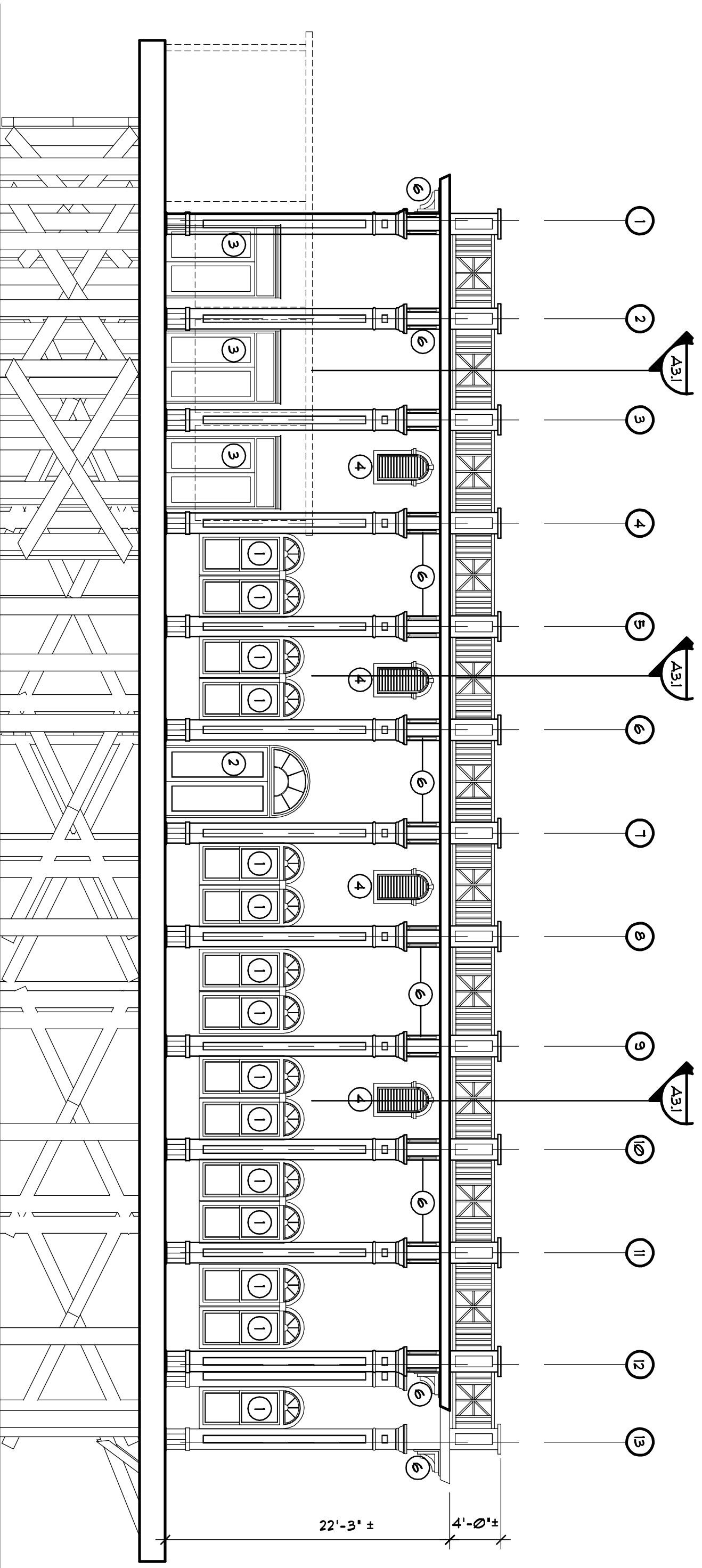
- CONSTRUCTION NOTES:**
- 1 NEW VINYL IMPACT-RESISTANT WINDOW UNIT. BASIS OF DESIGN: EAST UNGUARDED SERIES SH5000 SINGLE HUNG WITH SOLAR CONTROL, LOW E2 INSULATED GLASS, 35 3/4" x 71 3/4" R.O. TEMPERED EXTERIOR LITE. EAST UNGUARDED SERIES A6250 HALF-ROUND FIXED WITH SOLAR CONTROL, LOW E2 INSULATED GLASS WITH FOUR-LITE COLONIAL GRID PATTERN, 35 3/4" x 18' R.O.
 - 2 NEW PAIR 3'-4" x 8'-0" ALUMINUM IMPACT-RESISTANT DOORS. BASIS OF DESIGN: TRK 35H WITH 9/16" GRAY LAMINATED GLASS. HARDWARE TO INCLUDE WATER-RESISTANT THRESHOLD (H.C. ACCESSIBLE), DOR-O-MATIC 1450 EXIT DEVICE, AND LCN 4041 SURFACE MOUNT CLOSERS. ONE NON-DUPRIN FOUR SUPPLY SHALL BE PROVIDED FOR OPERATION OF BOTH ELECTRIC DEVICES.
 - 3 NEW PAIR 3'-4" x 7'-0" ALUMINUM IMPACT-RESISTANT DOORS. BASIS OF DESIGN: TRK 35H WITH 9/16" GRAY LAMINATED GLASS. HARDWARE TO INCLUDE WATER-RESISTANT THRESHOLD (H.C. ACCESSIBLE), DOR-O-MATIC 1450 EXIT DEVICE, AND LCN 4041 SURFACE MOUNT CLOSERS. ONE NON-DUPRIN FOUR SUPPLY SHALL BE PROVIDED FOR OPERATION OF BOTH ELECTRIC DEVICES.
 - 4 NEW DECORATIVE URETHANE LOUVER. BASIS OF DESIGN: ETON 34x48 CATHEDRAL.
 - 5 FRAME-IN OPENING WITH P.T. 2x6 AND 3/4" MARINE-GRADE PLYWOOD. PROVIDE MOISTURE BARRIER AND FIBERGLASS LATH. FINISH WITH SYNTHETIC STUCCO.
 - 6 NEW PAIR MOLDED POLYURETHANE DECORATIVE BRACKETS.
 - 7 NEW VINYL IMPACT-RESISTANT WINDOW UNIT WITH 9P ANDREI GLASS. EAST UNGUARDED SERIES SH5000 SINGLE HUNG WITH SOLAR CONTROL, LOW E2 INSULATED GLASS, 35 3/4" x 71 3/4" R.O. TEMPERED EXTERIOR LITE. EAST UNGUARDED SERIES A6250 HALF-ROUND FIXED WITH SOLAR CONTROL, LOW E2 INSULATED GLASS WITH FOUR-LITE COLONIAL GRID PATTERN, 35 3/4" x 18' R.O.



NORTH ELEVATION

SCALE: 1/8"=1'-0"

C 422



WEST ELEVATION

SCALE: 1/8"=1'-0"

D 422

918 NORTH NOVA RD.
HOLLY HILL, FL 32117
AA 28000587
PHONE (386) 255-8987
FAX (386) 255-8989



REV	REVISIONS	DATE

DAYTONA BEACH PIER BUILDING RENOVATION

MAIN STREET DAYTONA BEACH, FL

DATE: 06/30/10
 DGN BY: HKC
 DGN BY: DHS
 REV BY: DHS
 SCALE: AS NOTED

SHEET
A2.1
 NEW ELEVATIONS