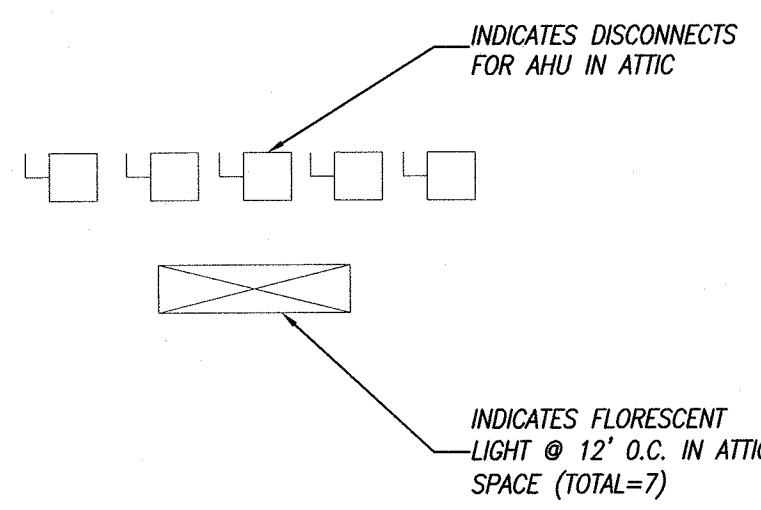
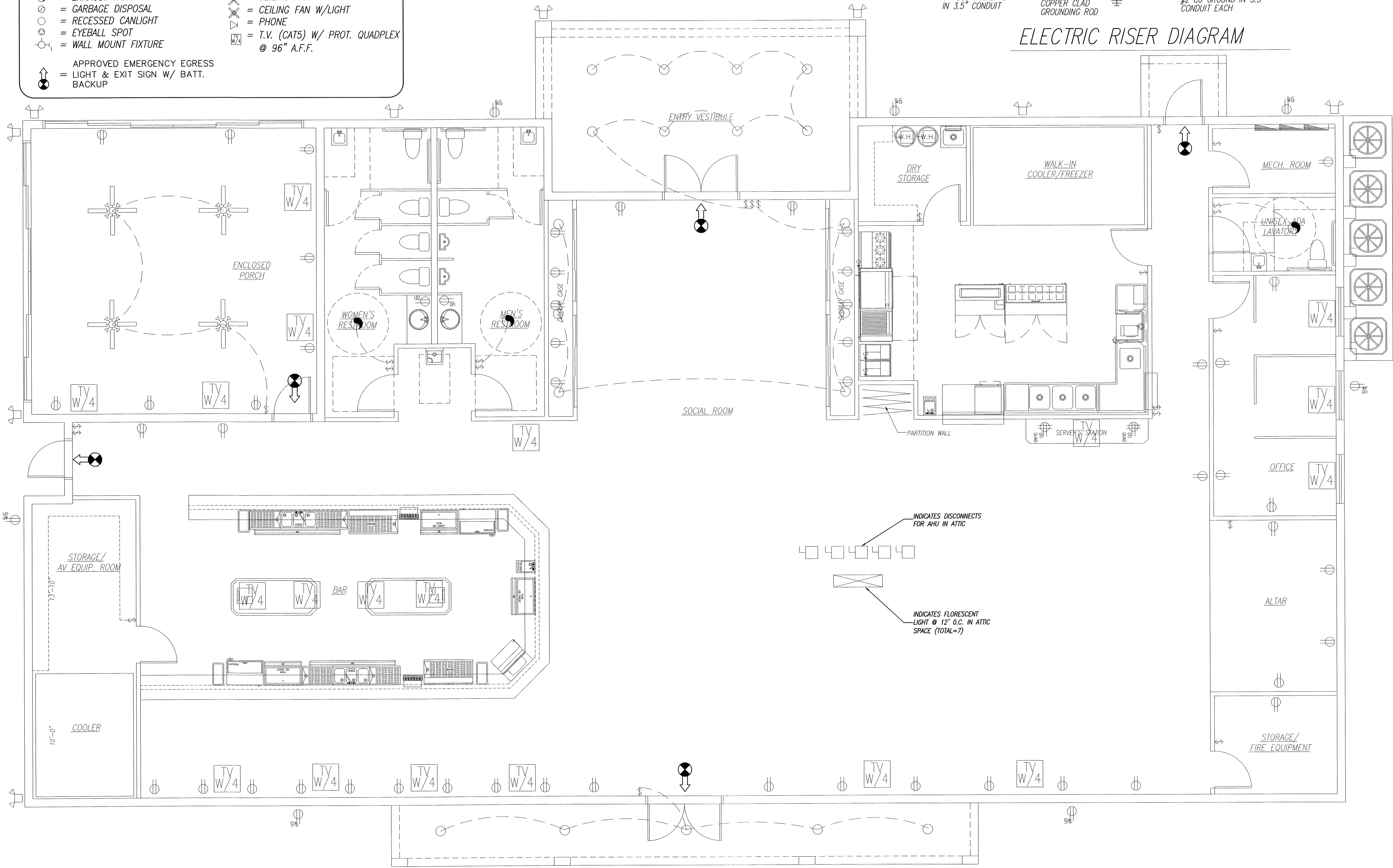
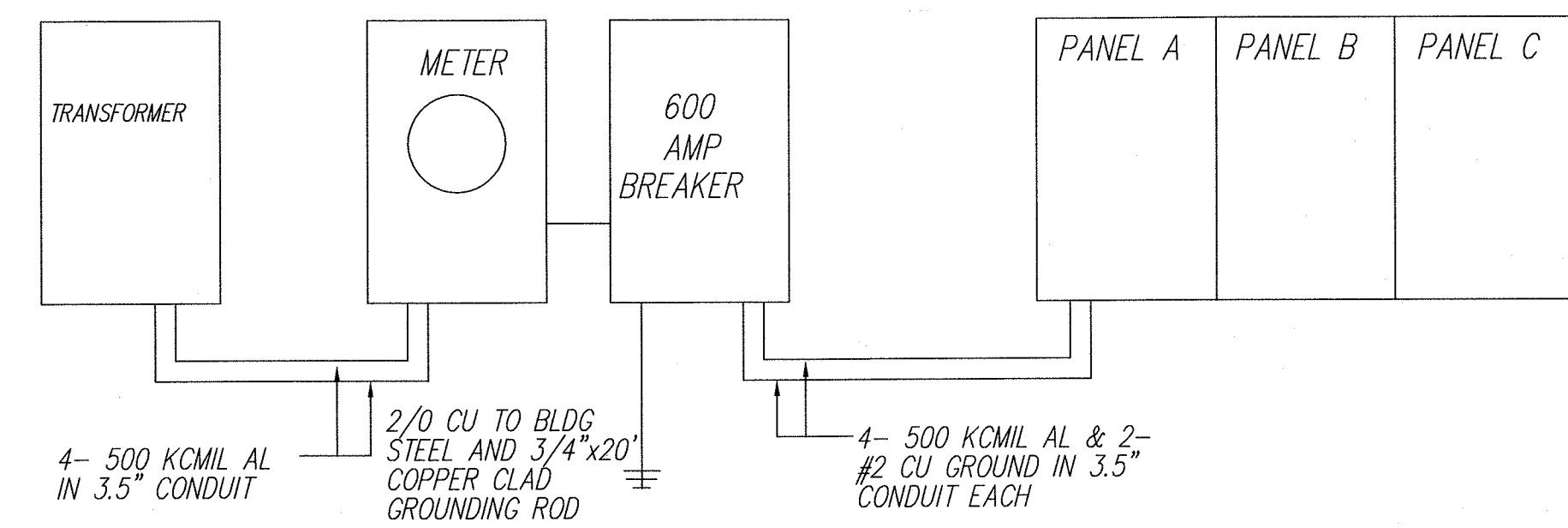


ELECTRICAL SYMBOL KEY

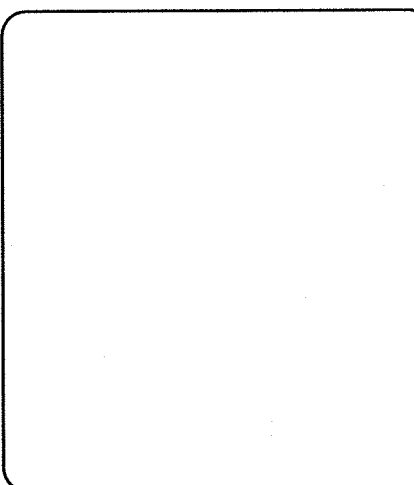
	= DUPLEX OUTLET		= WALL SCONCE
	= HALF SWITCHED OUTLET		= JUNCTION BOX
	= GROUND FAULT DUPLEX OUTLET		= FLOODLIGHT
	= WATERPROOF GROUND FAULT		= SWITCH
	= 220 VOLT OUTLET		= THREE-WAY SWITCH
	= 220 VOLT DISCONNECT		= PANEL
	= CEILING FIXTURE		= FLUORESCENT FIXTURE
	= PENDANT LIGHT		= FLUORESCENT SINGLE TUBE
	= FLOOR OUTLET		= UNDER CABINET FLUORESCENT
	= EXHAUST FAN		= CEILING FAN
	= GARBAGE DISPOSAL		= CEILING FAN W/LIGHT
	= RECESSED CANLIGHT		= PHONE
	= EYEBALL SPOT		= T.V. (CAT5) W/ PROT. QUADPLEX @ 96" A.F.F.
	= WALL MOUNT FIXTURE		
	= APPROVED EMERGENCY EGRESS		
	= LIGHT & EXIT SIGN W/ BATT. BACKUP		



ELECTRIC PLAN
SCALE: 1/4" = 1'-0"

NOTES:
1. ELECTRICAL REQUIREMENTS FOR KITCHEN & BAR EQUIPMENT ARE NOT AVAILABLE AT THIS TIME.

Daniel Johns Engineering
Professional Engineers
3869 S. Nova Rd., Suite #4, Port Orange, Florida 32128
Phone: 386-756-8582 / Fax: 386-756-0677



FRATERNAL ORDER OF EAGLE #4401
324 BEVILLE ROAD
DAYTONA BEACH, FLORIDA 32114

NO.	DATE	REVISION
1)	08/03/11	NEW
2)	09/27/11	CITY STAFF
3)	10/03/11	CITY STAFF
4)	12/27/11	CITY STAFF

DRAWN BY: N.M.
DESIGN BY: N.M.
DATE: 08/03/11

ISSUED FOR :
 PRICING ONLY
 REVIEW ONLY
 CONSTRUCTION

PLAN NO.: N/A
TYPE: CMU
GARAGE: N/A

SHEET NUMBER: 15B OF 19