

PROJECT INTENT:

- THE SCOPE OF THE PROJECT IS A NEW PRE-ENG. MTL. BUILDING ADDITION TO THE EAST SIDE OF THE EXISTING PRESS AREA AT THE NEWS-JOURNAL.
- THERE IS NO INCREASE TO THE REQUIRED PARKING SPACES.
- THERE IS NO INCREASE TO THE NUMBER OF STAFF ON PREMISES.

CODE REVIEW SUMMARY

LIFE SAFETY DATA:

GENERAL CONSTRUCTION NOTES PER (F.B.C. 2007 IV 2009 REV. AND F.B.C. EXISTING BUILDING 2007 IV 2009 REV.)

TYPE OF OCCUPANCY: STORAGE

GROUP S-1: (MODERATE HAZARD - STORAGE)

BUILDING SIZE: OVERALL GROSS

GROUP S-1: EXISTING BUILDING
OFFICE - 64,009 SF
WAREHOUSE - 57,601 SF
PROPOSED STORAGE
ONE STORY - 64,480 SF

OCCUPANCY LOAD:

TABLE 1004.1.1
GROUP S-1: 6,480 S.F. / 300 S.F. = 21.6 (22)
TOTAL OCCUPANCY LOAD = 22 PEOPLE

TYPE OF CONSTRUCTION:

TYPE II-B UNPROTECTED / SPRINKLERED.
SEPARATED BY 2 HR. RATED WALL FROM EXISTING BUSINESS
TYPE II-B UNPROTECTED / SPRINKLERED. (STORAGE S-1)

ALLOWABLE BUILDING AREA:

17,500 SF ALLOWABLE

MEANS OF EGRESS: (OCCUPANCY COUNT: 22)

MAX. TRAVEL DISTANCE TO EXIT = 100 FT. (F.B.C. TABLE 1016.1)
MAX. DEAD END CORRIDOR LENGTH = 20 FT.
EGRESS WIDTH PER PERSON SERVED = 0.2' (F.B.C. TABLE 1005.1)
EGRESS WIDTH TO SERVE OCCUPANTS 22 x 0.2' = 4.4'
MIN. CORRIDOR WIDTH = 36" (30 OR LESS OCCUPANTS) (F.B.C. 1017.2)
ACTUAL CORRIDOR WIDTH = 48" (MIN.)
MIN. NUMBER OF EXITS REQ'D = 2
(ALL NEW EXIT DOORS TO BE 3'-0" WIDE UNLESS OTHERWISE NOTED)

MINIMUM FIRE RESISTANCE:

OPEN PLAN - NO CORRIDORS
SPRINKLERED = 0 HR
(F.B.C. TABLE 1017.1)

OCCUPANCY SEPARATION REQUIREMENTS:

EXISTING BUSINESS R-1 / STORAGE S-1 = 2 HR.
(F.B.C. TABLE 106.3.4)

EXTERIOR WALL OPENING REQUIREMENTS:

HORIZONTAL SEPARATION OVER 30' FROM PROPERTY LINE
NO LIMIT ON UNPROTECTED WALL OPENINGS. (F.B.C. TABLE 602)

HANDICAPPED ACCESSIBILITY:

ALL PUBLIC SPACES WITHIN THE NEW FACILITY WILL BE DESIGNED TO PROVIDE ACCESSIBILITY FOR THE HANDICAPPED PER DCA'S REQUIREMENTS IN FLORIDA ACCESSIBILITY CODE FOR BUILDING CONSTRUCTION. (PER CHAPTER 11 - F.B.C.)

DOOR HARDWARE IN THE MEANS OF EGRESS, INCLUDING EXIT ACCESS DOORS, WILL BE OPERABLE FROM THE INSIDE WITHOUT SPECIAL KEY, EFFORT OR KNOWLEDGE, PER FBC 2007 SECTION 1008.1.6. THE HARDWARE SHALL BE LEVER HANDLE OR EQUAL FOR ALL NEW DOORS PER FLORIDA STATUTE

CHANGES IN ELEVATION OF 1/4" TO 1/2" SHALL BE LEVELLED AT A SLOPE OF 1 TO 2 OR LESS. CHANGES IN ELEVATION OF 1/4" TO 2" SHALL BE RAMPED WITH REQUIRED PLATFORMS AND RAILINGS (PER CHAPTER 11 F.B.C.)

NOTES AND SYMBOLS LEGEND:

EMERGENCY LIGHTING: NOTE, ALL BUILDING LIGHTING IS CONNECTED TO THE STANDBY GENERATOR.

SD SMOKE DETECTORS IN CORRIDORS TO SLEEPING ROOMS AND LIVING SPACES. SMOKE DETECTORS ARE POWERED BY THE BUILDING ELEC. SYSTEM, INTERCONNECTED, AND PROVIDED WITH BATTERY BACK-UP.

FS FIRE ALARM - FULL STATION

HORN / STROBE SIGNAL DEVICE

ILLUMINATED EXIT SIGNS

STROBE ANNUNCIATOR (WALL MOUNTED)

○ SURFACE MOUNTED FIRE EXTINGUISHER

ARSENALS (OR EQUAL) FIRE EXTINGUISHER

MODEL # MP 120LB, 20A-120B-C AT

LOCATIONS MARKED FE. PROVIDE WALL

BRACKET STY. TYPICAL

KILL BE 3'-0" TO TOP OF EXTINGUISHER (MAX.)

THIS IS A MULTI-PURPOSE FIRE EXTING. FOR

A-B-C TYPE FIRES.

2 HR FIRE BARRIER - OCCUPANCY SEPARATION (FBC 106)

EXISTING 6X12X16 CMU WALL PER FBC TABLE 120.1(2)

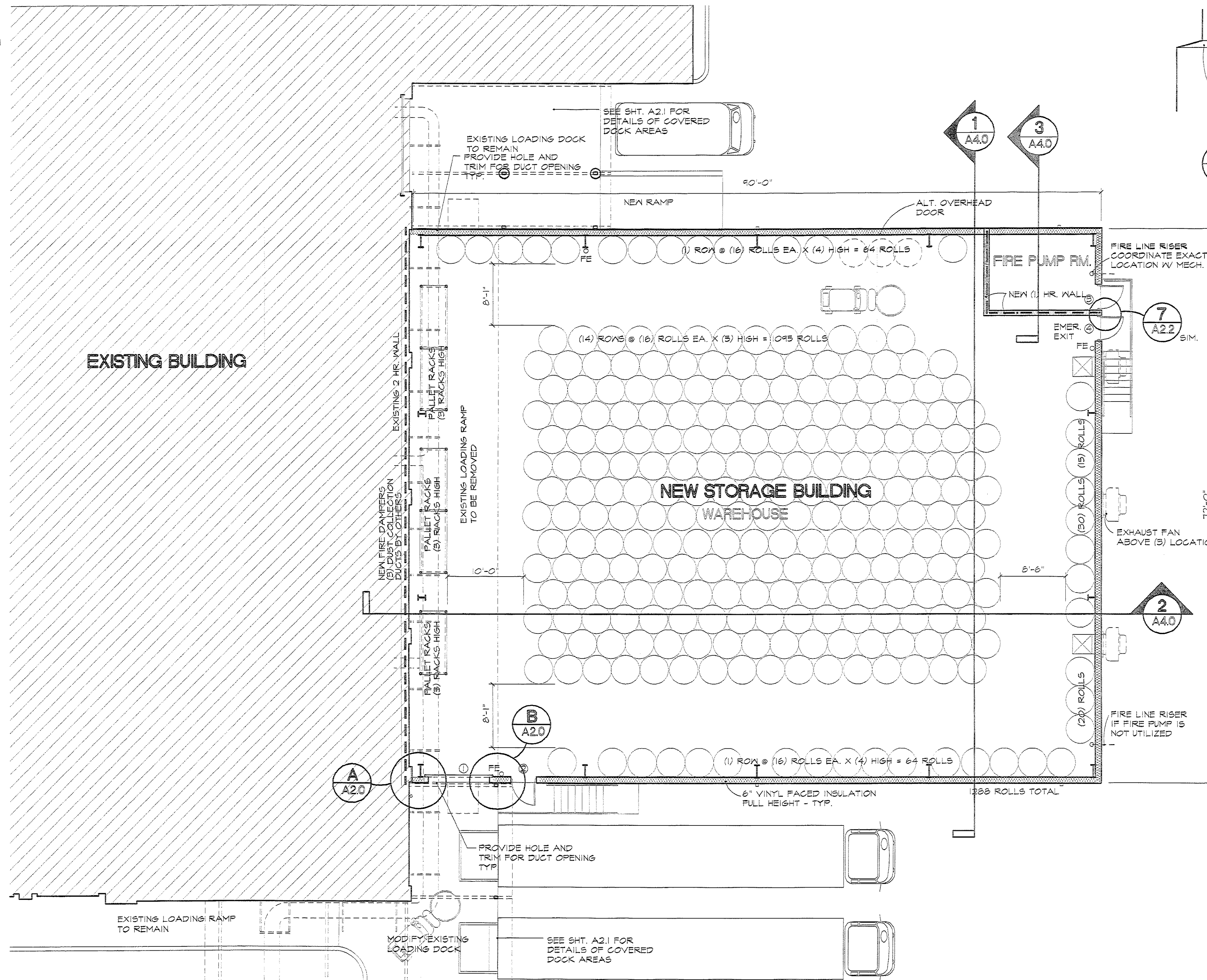
ITEM 3-1.3 MIN. FINISHED THICKNESS = 4.0 INCHES

EXISTING 6X12X16 CMU EQUIVALENT THICKNESS = 4.6 IN.

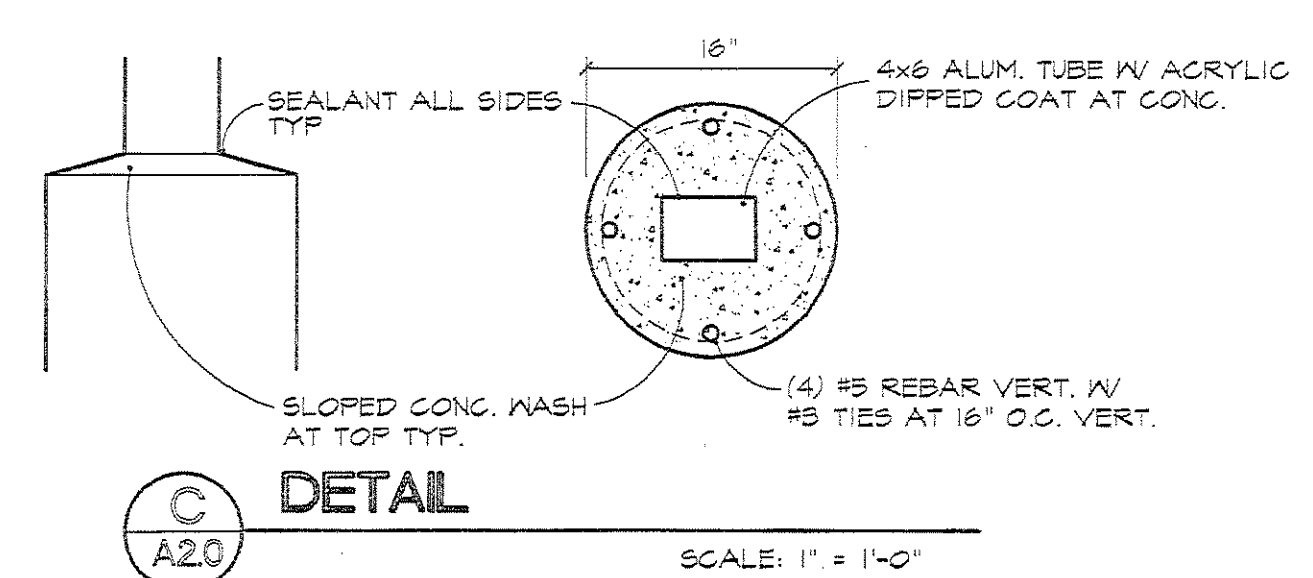
1 HR FIRE BARRIER - FIRE PUMP SEPARATION (NFPA 20)

EQUIPMENT PROTECTION PER TABLE 5.12.1.1.2

SEE ELECTRICAL PLAN FOR ELECTRICAL ITEMS



FLOOR PLAN
NEWSPRINT WAREHOUSE
LIFE SAFETY NOTES
SCALE: 1/8" = 1'-0"



DETAIL
SCALE: 1" = 1'-0"

GENERAL NOTES:

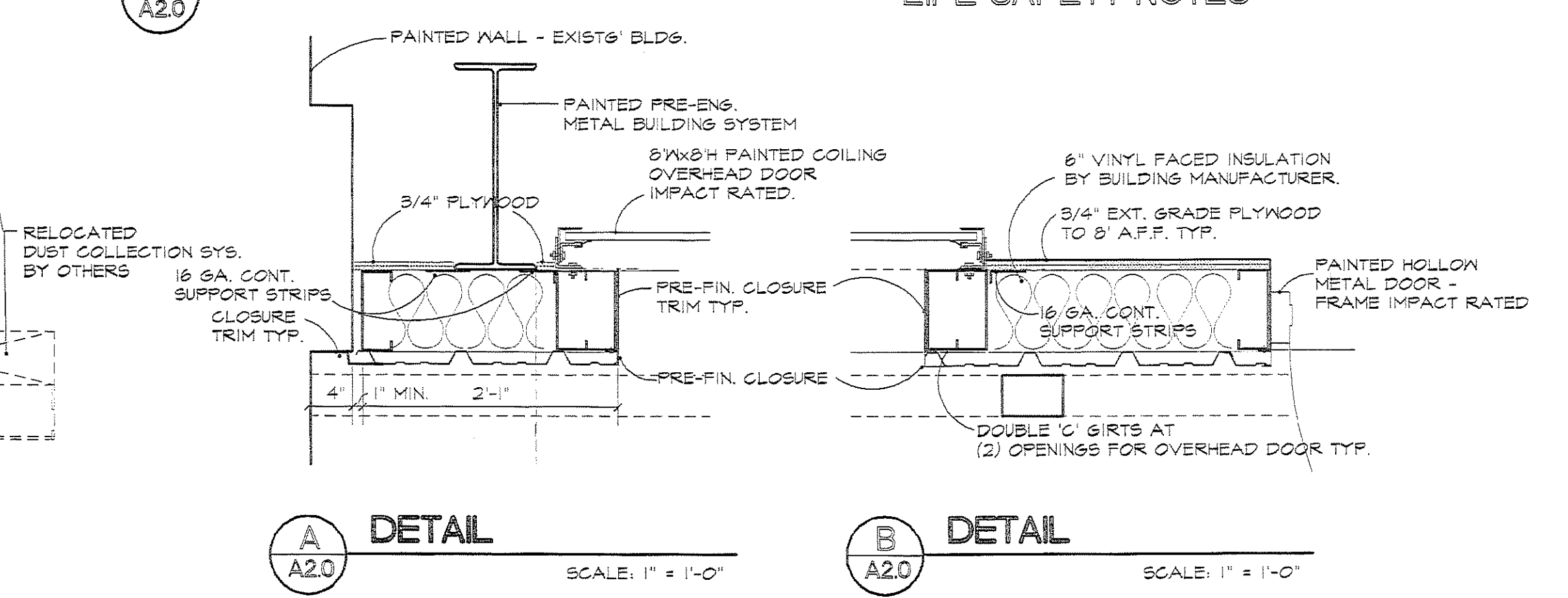
DOOR SCHEDULE

DOOR NO.	DOOR TYPE	SIZES		MATERIAL	MAT. DETAILS	REMARKS
		WIDTH	HEIGHT			
1	B	8'-0"	0'-0"	2		NOTE 1
2	A	8'-0"	7'-0"	1 1/2"	H.M.F.I.	NOTE 2
3	A	8'-0"	7'-0"	1 1/2"	H.M.F.I.	NOTE 2
4	A	8'-0"	7'-0"	1 1/2"	H.M.F.I.	NOTE 2

NOTES:
1. IMPACT RESIST. DOOR SYSTEMS
2. SEE SPECS FOR HARDWARE SET INFO.

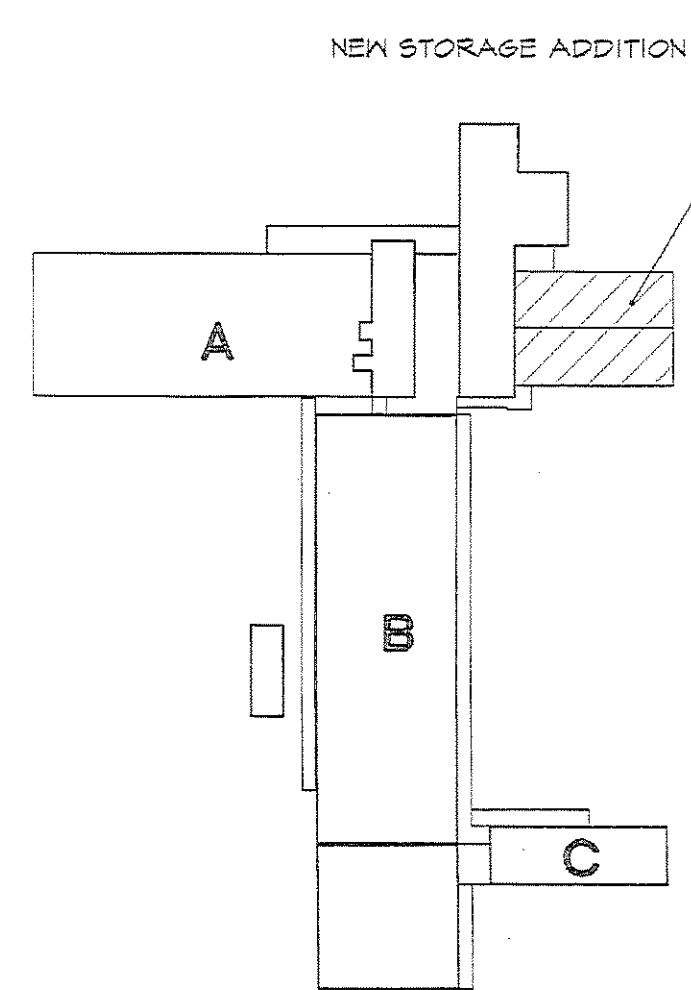
ROOM FINISH SCHEDULE

ROOM NUMBER	ROOM DESCRIPTIONS	FLOOR		BASE	WALL	CEILING	HEIGHT	REMARKS
		CONG. EPOXY COATED	NONE					
100	WAREHOUSE	○	○	○	6 G.W.B. - (PAINTED) 6 M.U. - (PAINTED) 6 P.A. - (PAINTED)	○	8'-0"	VARIABLE
101	PUMP ROOM	○	○	○	6 G.W.B. (PAINTED) 6 EXPOSED STRUCTURE	○	8'-0"	



DETAIL A
SCALE: 1" = 1'-0"

DETAIL B
SCALE: 1" = 1'-0"



KEY PLAN

HAWKINS, HALL & OGLE ARCHITECTS, INC.
238 MAGNOLIA AVENUE
DAYTONA BEACH, FLORIDA 32114
PH (386) 255-6163 FAX (386) 257-5650

NEW WAREHOUSE ADDITION
DAYTONA BEACH NEWS JOURNAL

NO.	REVISION / SUBMISSIONS	DATE

SHT. TITLE: NEWSPRINT STORAGE BUILDING
SCALE: 1/8" = 1'-0"

COMMISSION NO: 1010
DRAWN: JEH
CHECKED: JEH
DATE: 9-JULY-10

SHEET NO: A20
OF