

5531 South Ridgewood Avenue
 Unit 1
 Port Orange, Florida 32127
 (386)756-8676
 CERTIFICATE OF AUTHORIZATION NUMBER 8081
 ENGINEERING@FINLEYENGINEERS.COM

FINLEY ENGINEERING GROUP

DAYTONA BEACH NEWS JOURNAL
 warehouse addition

PROJECT NUMBER
 FEQ# 1018

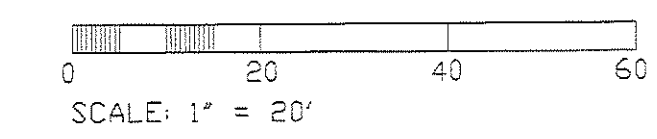
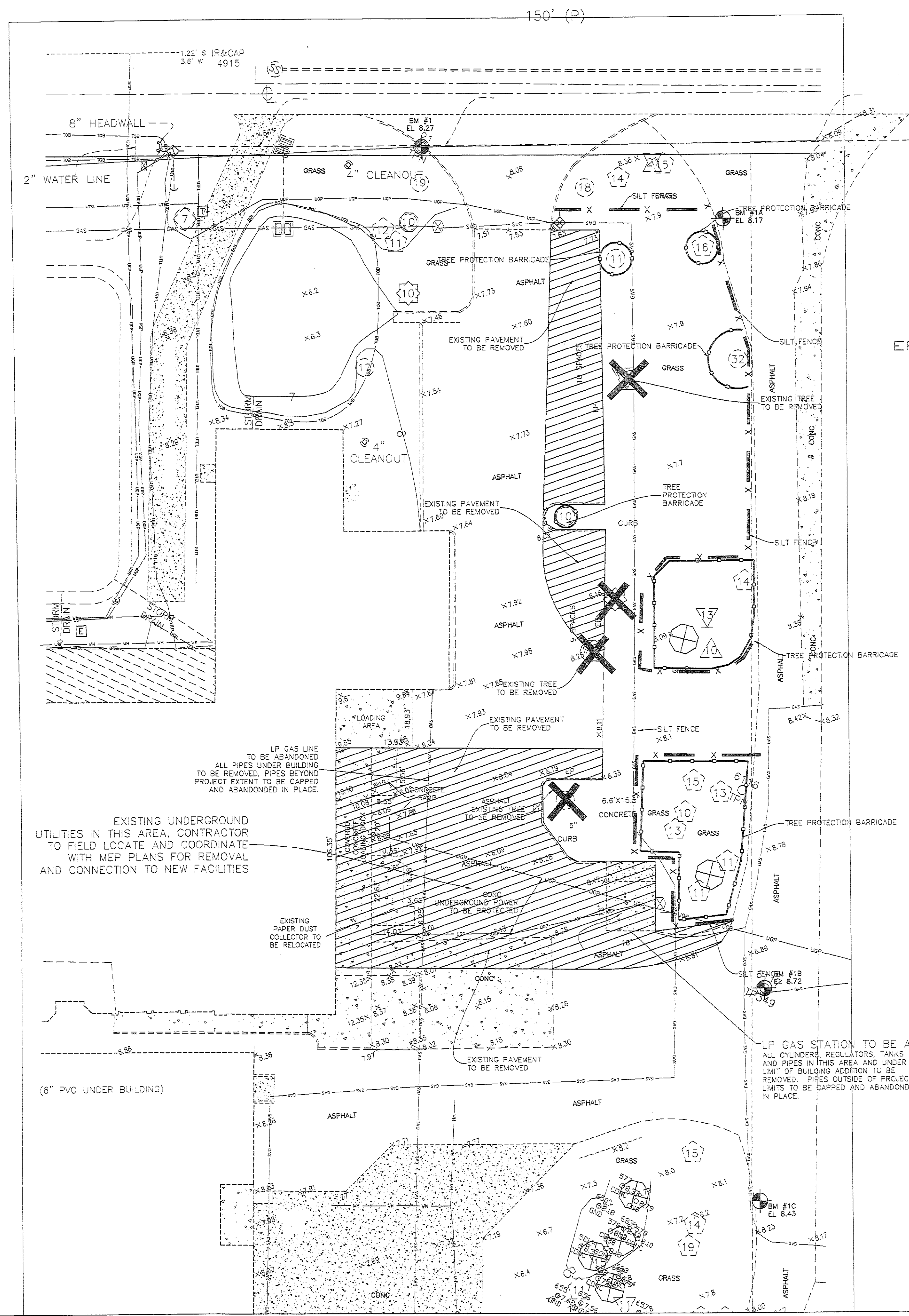
JERRY K. FINLEY, P.E.
 P.E. # 29909

SHAWN P. FINLEY
 P.E. # 57446

SHEET TITLE
 STORMWATER POLLUTION PREVENTION PLAN

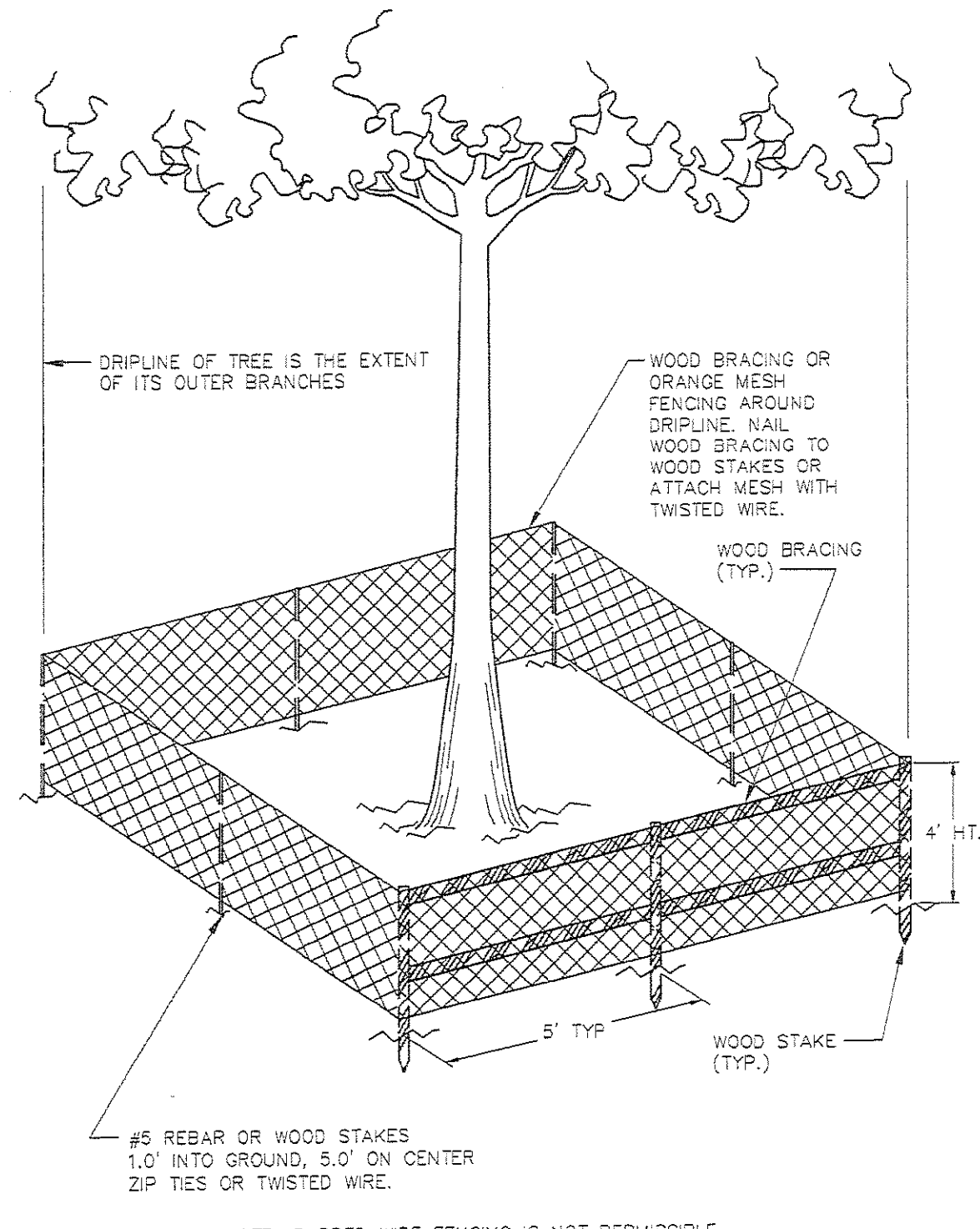
SHEET

C-2

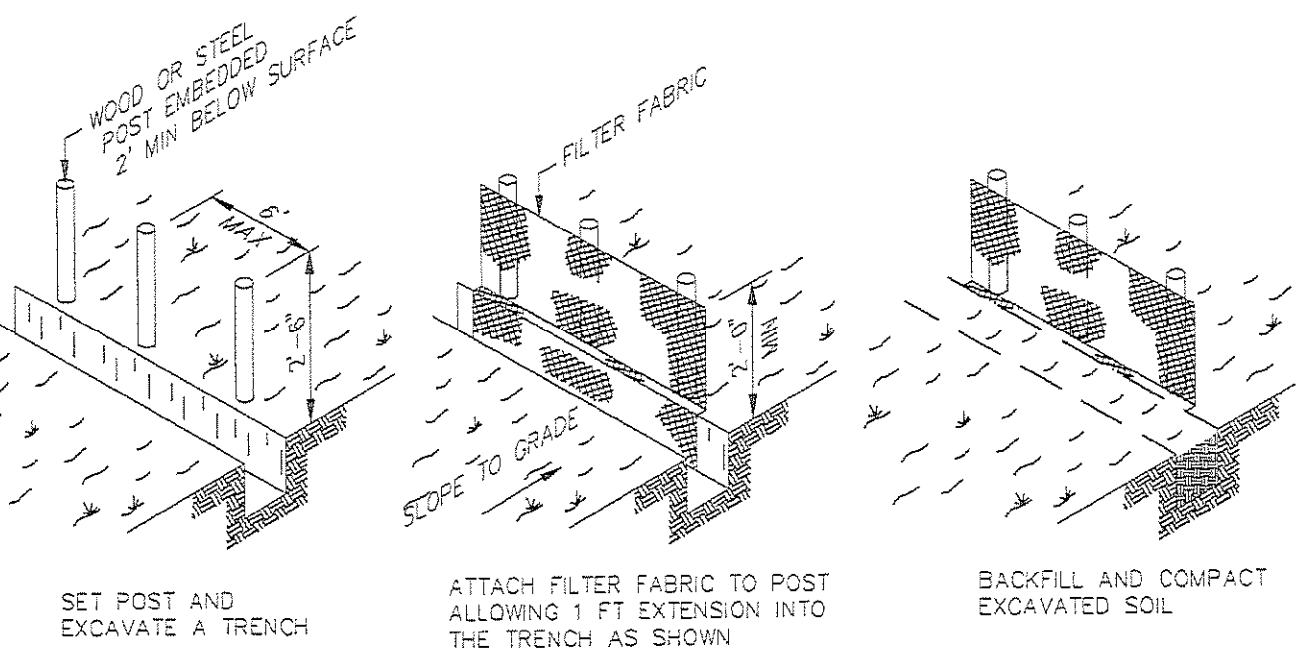


EROSION & SEDIMENT CONTROL NOTES (ST-1)

1. ALL CONSTRUCTION ACTIVITIES SHALL INCORPORATE BEST MANAGEMENT PRACTICES (BMP'S) TO CONTROL EROSION, SEDIMENTATION, AND THE POTENTIAL FOR DOWNSTREAM WATER QUALITY DEGRADATION.
2. CONTRACTOR SHALL MINIMIZE DISTURBANCE OF EXISTING VEGETATION, (PARTICULARLY AROUND THE PROJECT PERIMETER) AND ADJACENT EXISTING DRAINAGE PATTERNS TO THE MAXIMUM EXTENT PRACTICAL DURING THE CONSTRUCTION PROCESS.
3. SILT FENCES AND TURBIDITY BARRIERS SHALL BE INSTALLED ON SITE AND APPROVED BY THE CITY PRIOR TO CONSTRUCTION, AND SHALL BE INSPECTED WEEKLY BY THE CONTRACTOR AND CORRECTIVE ACTION TAKEN AS NECESSARY.
4. STORMWATER RETENTION, DETENTION, STORAGE AND CONVEYANCE SYSTEMS MUST BE EXCAVATED TO ROUGH GRADE PRIOR TO BUILDING CONSTRUCTION OR PLACEMENT OF IMPERVIOUS SURFACE WITHIN THE AREA SERVED BY THOSE SYSTEMS. ADEQUATE MEASURES MUST BE TAKEN TO PREVENT SILTATION OF THESE TREATMENT SYSTEMS AND CONTROL STRUCTURES DURING CONSTRUCTION. SILTATION MUST BE REMOVED FROM THE STORMWATER SYSTEM WHEN HALF FULL AND IMMEDIATELY PRIOR TO FINAL GRADING AND GRASSING OF THE PROJECT.
5. CONTRACTOR SHALL SOD ALL SWALES AND STORMWATER FACILITIES IN ACCORDANCE WITH TEMPORARY BMP'S WITHIN 14 DAYS AFTER CONSTRUCTION. THIS IS REQUIRED TO STABILIZE THE SLOPES AND MINIMIZE EROSION.
6. DURING ALL CONSTRUCTION OF THE PERMITTED SYSTEM INCLUDING STABILIZATION AND REVEGETATION OF DISTURBED SURFACES, CONTRACTOR IS RESPONSIBLE FOR THE SELECTION, IMPLEMENTATION, AND OPERATION OF ALL EROSION AND SEDIMENT CONTROL MEASURES REQUIRED TO RETAIN ALL SEDIMENT ONSITE AND PREVENT VIOLATIONS OF THE WATER QUALITY STANDARDS IN ACCORDANCE WITH THE FLORIDA ADMINISTRATIVE CODE AND PROJECT PERMIT REQUIREMENTS.
7. THE CONTRACTOR SHALL CONSTRUCT AND MAINTAIN A PROTECTIVE COVER (VEGETATIVE OR SUITABLE ALTERNATIVES) FOR EROSION AND SEDIMENT CONTROL ON ALL LAND SURFACES EXPOSED OR DISTURBED BY CONSTRUCTION OF THE PERMITTED PROJECT, UNLESS MODIFIED BY ANOTHER CONDITION OF THE PERMIT OR OTHERWISE SPECIFIED ON A DISTRICT APPROVED EROSION AND SEDIMENT CONTROL PLAN. THE PROTECTIVE COVER MUST BE INSTALLED WITHIN FOURTEEN (14) DAYS AFTER FINAL GRADING OF THE AFFECTED LAND SURFACE. A PERMANENT VEGETATIVE COVER MUST BE ESTABLISHED WITHIN 60 DAYS OF ITS INSTALLATION. THE PERMITTEE'S REQUIREMENT TO MAINTAIN COVER ON OFFSITE AND ONSITE SURFACES SHALL NOT BE COMPLETE UNTIL AFTER THE WATER MANAGEMENT DISTRICT RECEIVES THE PERMITTEE'S STATEMENT OF COMPLIANCE.
8. AT A MINIMUM, SILT FENCES AND TURBIDITY BARRIERS SHALL BE INSTALLED PER PLAN. ADDITIONAL BMP MEASURES MUST BE TAKEN TO MINIMIZE IMPACTS OF RECEIVING WATERS SUCH AS THE USE OF APPROVED BARRIERS AT INLETS, ADDITIONAL SILT FENCING, SOIL ANTI-TRACKING DEVICES AND SODDING.
9. IT SHALL BE THE CONTRACTOR'S RESPONSIBILITY TO MAINTAIN THE PROJECT LIMITS IN COMPLIANCE WITH ALL JURISDICTIONAL PERMIT AND CITY REQUIREMENTS.
10. ANY TIME THE CONTRACTOR NEEDS TO SUBMIT A NOTICE OF INTENT TO USE A GENERAL PERMIT FOR STORMWATER DISCHARGE FROM LARGE AND SMALL CONSTRUCTION ACTIVITIES, A COPY OF THE PERMIT SHALL ALSO BE SUBMITTED TO THE CITY OF DAYTONA BEACH UTILITIES DEPARTMENT.
11. THE CONTRACTOR SHALL AS A MINIMUM PREPARE AND IMPLEMENT AN EROSION AND SEDIMENT CONTROL PLAN IN ACCORDANCE WITH FLORIDA DEPARTMENT OF ENVIRONMENTAL PROTECTION (FDEP) GUIDELINES.
12. DEWATERING ACTIVITIES SHALL BE APPROVED BY THE UTILITIES DEPARTMENT BEFORE DISCHARGING INTO THE CITY'S M4 SYSTEM.



TREE PROTECTION BARRICADE



- NOTES:**
1. MATERIALS, CONSTRUCTION METHODS AND MAINTENANCE SHALL BE IN ACCORDANCE WITH THE FLORIDA DEPARTMENT OF TRANSPORTATION STANDARD SPECIFICATIONS AND DESIGN STANDARDS CURRENT EDITION.
 2. CONTRACTOR SHALL PROVIDE SILT FENCES, SYNTHETIC JUTE BALES, WATTLES, &/OR HAVE BEST MANAGEMENT PRACTICES (BMP'S) AS REQUIRED AT ALL STORMWATER DISCHARGE POINTS FOR EROSION CONTROL AND SEDIMENT CONTROL DURING CONSTRUCTION.
 3. CONTRACTOR SHALL ROUGH GRADE STORM- WATER SWALES AND RETENTION AREAS PRIOR TO CONSTRUCTION OF SITE IMPROVEMENTS.
 4. CONTRACTOR SHALL MEET ALL PERMIT CONDITIONS AS ESTABLISHED BY THE CITY OF PORT ORANGE AND ALL OTHER APPLICABLE AGENCIES, INCLUDING BUT NOT LIMITED TO COUNTY, FDOT, AND THE SURWMD.
 5. CONTRACTOR WILL BE ALLOWED TO USE A SMALL PIECE OF EQUIPMENT UP TO THE SIZE AND WEIGHT OF A D-3 DOZER TO CLEAR A NARROW PATH TO INSTALL THE SILT FENCE.

SILT FENCE TURBIDITY BARRIER