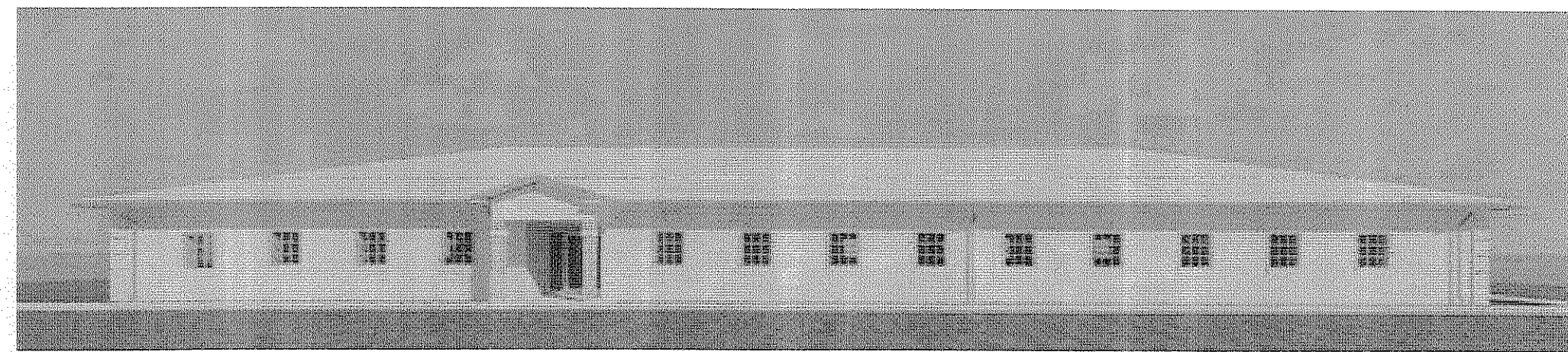


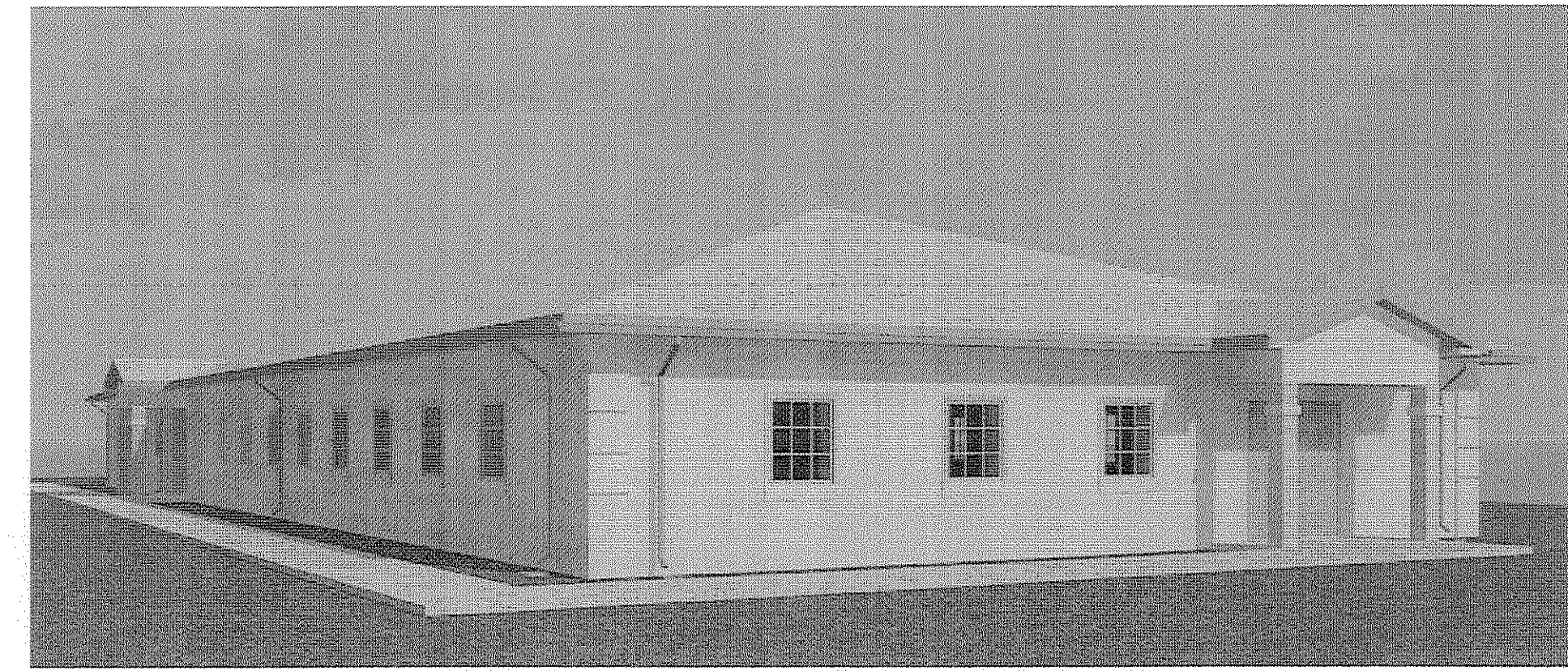
# VINCE CARTER SANCTUARY- PHASE 2

301 JUSTICE LANE  
BUNNELL, FL 32110  
11/08/11

**dj**  
DESIGN, INC.  
919 NORTH NOVA RD.  
HOLLY HILL, FL 32111  
AA 26000567  
PHONE (386) 255-6487  
FAX (386) 255-6484

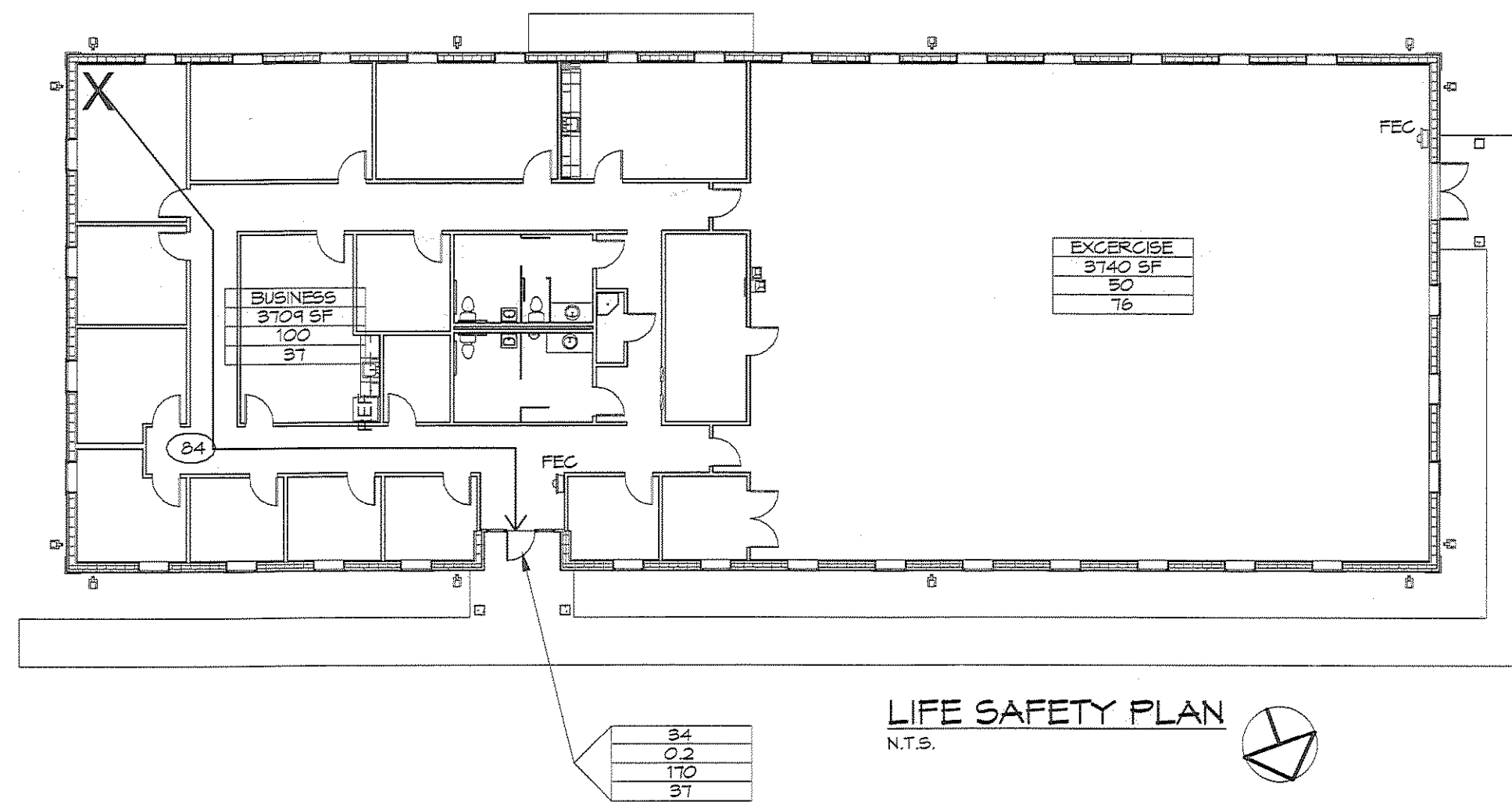


FRONT ENTRY



NORTH CORNER

SHEET LIST	
SHEET NUMBER	SHEET NAME
A 0.0	COVERSHEET
A 1.1	FLOOR & FOUNDATION PLAN
A 1.2	RCP & ROOF PLAN
A 2.1	ELEVATIONS & SECTIONS
A 4.1	WALL SECTIONS
A 4.2	WALL SECTIONS CONT.
A 5.1	SECTIONS & DETAILS
E 1	ELECTRICAL PLAN
E 2	LIGHTING / FIRE ALARM PLAN
M 1	MECHANICAL PLAN



LIFE SAFETY PLAN

LIFE SAFETY PLAN LEGEND  
PARTITION SYMBOLS

SYMBOL	DESCRIPTION	REMARKS
---	1 HOUR FIRE RATING	
----	2 HOUR FIRE RATING	
→	PATH OF EGRESS	
LIFE SAFETY SYMBOLS		
FEC	FIRE EXTINGUISHER CABINET	
EGRESS DOOR CAPACITY		
A	A) DOOR SIZE OR STAIR WIDTH	
B	B) EGRESS WIDTH	
C	C) MAX ALLOWABLE LOAD	
D	D) ACTUAL OCCUPANT LOAD	
OCCUPANT LOAD		
A	A) OCCUPANCY	
B	B) ACTUAL FLOOR AREA	
C	C) OCCUPANT LOAD / PERSONS PER S.F.	
D	D) ACTUAL OCCUPANT LOAD	
TRAVEL DISTANCE		
20	DISTANCE FROM MOST REMOTE POINT OF OCCUPANT AREA	
→	DIRECTION OF TRAVEL / PATH OF TRAVEL	
X	START / FINISH OF TRAVEL DISTANCE	

### CODE REVIEW DATA

**APPLICABLE CODES:**  
2007 FLORIDA BUILDING CODE, IV, 2004 SUPPLEMENTS  
2007 FLORIDA FIRE PREVENTION CODE  
2007 NFPA 1 and 2009 NFPA 101 LIFE SAFETY CODE

**AUTHORITY HAVING JURISDICTION**  
CITY OF BUNNELL  
CHIEF BUILDING OFFICIAL- DENNIS FISHER

**OCCUPANCY TYPE (CHAPTER 3)**  
GROUP 'B' - BUSINESS

**CONSTRUCTION TYPE (CHAPTER 6)**  
TYPE III B  
STRUCTURAL FRAME 0 HR  
BEARING WALLS- EXTERIOR 2 HR  
BEARING WALLS- INTERIOR 0 HR  
FLOOR CONSTRUCTION 0 HR  
ROOF CONSTRUCTION 0 HR

**ALLOWABLE AREA (CHAPTER 5)**  
TABLE 503 - 19,000 SF - GROUP 'B' OCCUPANCY - TYPE III B CONSTRUCTION

**PROJECT BUILDING AREA AND HEIGHT**  
TOTAL BUILDING  
7,519 SQUARE FEET  
1 STORY, 20'-2" ROOF HEIGHT

**FIRE SUPPRESSION SYSTEM**  
FULLY SPRINKLERED

**WIND LOAD REQUIREMENTS (CHAPTER 16)**  
BASIC WIND SPEED (FIGURE 1604)  
WIND IMPORTANCE CATEGORY (TABLE 1604.5)  
WIND EXPOSURE CATEGORY (1609.4)  
HEIGHT AND EXPOSURE COEFFICIENT (TABLE 1609.6 (2))  
ENCLOSURE STATUS  
INTERNAL PRESSURE COEFFICIENT  
WIND BORNE DEBRIS ZONE

### PLUMBING FIXTURE COUNT (2004 FLORIDA PLUMBING CODE)

BUSINESS SPACE (2009 TABLE 1004.1.2) 7,519 SF @ 75 PPL  
MEN 30  
WOMEN 30

**BUILDING AREA and OCCUPANT CAPACITY**  
TOTAL TENANT AREA- 7,519 SF @ 100 SF PER PERSON- 75 PEOPLE

**EGRESS CALCULATION**

TENANT AREA	REQUIRED	PROVIDED
	211 / PERSON @ 15'	108'

**MAXIMUM ALLOWABLE TRAVEL DISTANCE**  
100 FT.  
MAXIMUM COMMON PATH OF TRAVEL (PARAGRAPH 1019.5)  
75'- (100' IN GROUP 'B' OCCUPANCY WITH A/S PROTECTION)

**SPECIAL OCCUPANCY REQUIREMENTS**  
INTERIOR FINISH REQUIREMENTS (CHAPTER 8)  
VERTICAL EXITS AND EXIT PASSAGEWAYS  
EXIT ACCESS CORRIDORS AND OTHER EXITWAYS  
ROOMS AND ENCLOSED SPACES

CLASS 'B'  
CLASS 'B'  
CLASS 'C'

### GENERAL NOTES

- THESE DRAWINGS AND THE PROJECT MANUAL ARE COMPLEMENTARY, AND ANY REQUIREMENT OF ONE SHALL BE A REQUIREMENT OF THE OTHER. IT IS THE CONTRACTOR'S RESPONSIBILITY TO EXAMINE THE DRAWINGS AND SPECIFICATIONS AND TO COMPARE THE REQUIREMENTS OF EACH DIVISION (I.E. CIVIL, ARCHITECTURAL, MECHANICAL, ELECTRICAL, ETC.) AND ENSURE THAT EACH TRADE OR SUBCONTRACTOR IS MAKING THE ALLOWANCES NECESSARY TO PROVIDE THE OWNER A COMPLETE FACILITY, OPERATIONAL IN ALL RESPECTS UNLESS OTHERWISE SPECIFICALLY NOTED IN THE DRAWINGS OR PROJECT MANUAL. IT IS ALSO THE CONTRACTOR'S RESPONSIBILITY TO NOTIFY THE ARCHITECT/ENGINEER OF ANY DEFICIENCIES OR DISCREPANCIES AMONG THE DIVISIONS OF THE DRAWINGS AND SPECIFICATIONS PRIOR TO THE BID DATE. NEITHER THE OWNER NOR THE ARCHITECT/ENGINEER WILL BE RESPONSIBLE FOR ANY DEFICIENCIES OR DISCREPANCIES RAISED AFTER THE BID OFFERING. ACCORDINGLY, IN LIGHT OF THESE OBLIGATIONS, THE ARCHITECT/ENGINEER IS OBLIGATED TO INTERPRET THE DRAWINGS AND SPECIFICATIONS IN A MANNER THAT WILL PROVIDE THE OWNER WITH A COMPLETE, FUNCTIONING FACILITY FOR THE BID PRICE.
- ALL IMPROVEMENTS MUST BE IN ACCORDANCE WITH THE 2007 FLORIDA BUILDING CODE (IV/2004 SUPPLEMENT) WITH RESPECT TO HANDICAPPED ACCESSIBILITY DESIGN AND CONSTRUCTION STANDARDS.
- ALL NEW DOORS INSTALLED IN THE MEANS OF EGRESS INCLUDING EXIT ACCESS DOORS FROM ALL WALK-IN ROOMS AND AREAS ARE 36" WIDE THEREBY PROVIDING A MINIMUM 32" CLEAR OPENING.
- DOOR HARDWARE FURNISHED FOR NEW DOORS INSTALLED IN THE MEANS OF EGRESS, INCLUDING EXIT ACCESS DOORS, WILL BE OPERABLE FROM THE INSIDE WITHOUT SPECIAL KEY, EFFORT OR KNOWLEDGE. THE HARDWARE IS A LEVER HANDLE OR EQUAL PER 2007 FLORIDA BUILDING CODE (IV/2004 REVISIONS). DOORS WILL RELEASE WHEN NO MORE THAN 15 LB. IS APPLIED TO THE RELEASING, APPROVED DOOR CLOSER PER NFPA 3-1.2.1 (C).
- CHANGES IN ELEVATIONS OF 1/4" TO 1/2" MUST BE BEVELED AT A SLOPE OF 1:2 OR LESS, CHANGES IN ELEVATION OF 1/2" TO 2" ARE RAMPED WITH REINFORCED PLATFORMS AND RAILINGS PER 2007 FLORIDA BUILDING CODE (IV/2004 REVISIONS).
- INSTALL HANDICAPPED GRAB BAR AS PER MANUFACTURER'S INSTRUCTIONS TO PROVIDE A LIVE LOAD STRENGTH OF 250 POUNDS, PER 2007 FLORIDA BUILDING CODE (IV/2004 REVISIONS).
- ANY AND ALL DEVIATIONS FROM SPECIFIED PRODUCTS MUST BE APPROVED BY THE ARCHITECT.
- PAINT ALL NEW SURFACES AS SCHEDULED AND AS REQUIRED TO ASSURE A UNIFORM APPEARANCE. PAINT ALL EXISTING WALL SURFACES TO REMAIN AS SCHEDULED UNLESS NOTED OTHERWISE.
- ALL PROPOSED CONSTRUCTION IS PURSUANT TO INFORMATION SHOWN ON THESE PLANS AND LOCAL CODES. OBTAIN ALL NECESSARY LICENSES AND PERMITS, UNLESS PREVIOUSLY OBTAINED BY THE OWNER.
- PROVIDE SAFE, SUFFICIENT, AND PROPER FACILITIES AT ALL TIMES FOR THE INSPECTION OF THE WORK BY THE OWNER, ENGINEER, AND ALL APPROPRIATE GOVERNMENTAL AND REGULATORY AGENCIES.
- CONSTRUCT THE PROJECT TO COMPLY WITH 2007 FLORIDA BUILDING CODE (IV/2004 REVISIONS) CHAPTER 16, FOR STRUCTURAL DESIGN LOADS INCLUDING APPLICABLE MINLOADS AND UPLIFT, AND ADOPTED AMENDMENTS AS REQUIRED BY CITY ORDINANCE. CERTIFY THAT ALL CONNECTIONS HAVE BEEN CHECKED TO WITHSTAND ALL APPLICABLE LOADS. REFER TO STRUCTURAL DRAWINGS.

REVISIONS

NO.	DATE	DESCRIPTION
1		
2		
3		
4		
5		
6		
7		
8		
9		
10		

COVERSHEET  
VINCE CARTER SANCTUARY- PHASE 2  
301 JUSTICE LANE  
BUNNELL, FLORIDA 32110

PLTR: - 02295.00  
DATE: - 10 NOV 11  
DRN BY: - RNS  
DSN BY: - DMS  
REV BY: - DMS  
SCALE: - As Indicated

*Daniel Smith*  
11.21.11

**A 0.0**